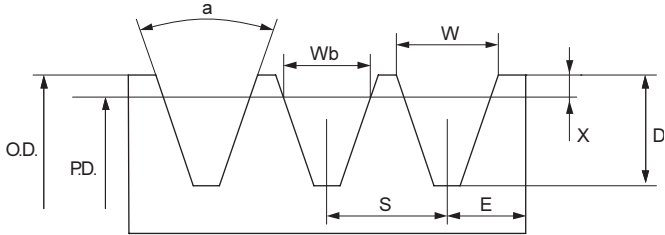


# Pulleys





# Pulleys



## Wedge belt pulleys

Belt series	Pitch Diameter Range	Groove Angle		Dimensions				
		a	W	W <sub>b</sub>	D	X	S	E
		°	mm	mm	mm	mm	mm	mm
SPZ	Up to 80	34°	9,7	8,5	11,0	2,00	12,0	8,0
	Over 80	38°	9,7	8,5	11,0	2,00	12,0	8,0
SPA	Up to 118	34°	12,7	11,0	13,8	2,75	15,0	10,0
	Over 118	38°	12,7	11,0	13,8	2,75	15,0	10,0
SPB	Up to 190	34°	16,2	14,0	17,5	3,50	19,0	12,5
	Over 190	38°	16,2	14,0	17,5	3,50	19,0	12,5
SPC	Up to 315	34°	22,0	19,0	23,8	4,80	25,5	17,0
	Over 315	38°	22,0	19,0	23,8	4,80	25,5	17,0

## Classical V-belt pulleys

Belt series	Pitch Diameter Range	Groove Angle		Dimensions			
		a	W	W <sub>b</sub>	D	X	S
		°	Inches	Inches	Inches	Inches	Inches
A-B	3,4 - 6,8	34°	0,612	0,625	0,175	0,750	0,500
	Over 6,8	38°	0,625	0,625	0,175	0,750	0,500
C	7,0 - 7,99	34°	0,879	0,780	0,200	1,000	0,688
	8,0 - 12,0	36°	0,887	0,780	0,200	1,000	0,688
	Over 12,0	38°	0,895	0,780	0,200	1,000	0,688
D	12,0 - 12,99	34°	1,259	1,050	0,300	1,438	0,875
	13,0 - 17,0	36°	1,271	1,050	0,300	1,438	0,875
	Over 17,0	38°	1,283	1,050	0,300	1,438	0,875
E	18,0 - 24,0	36°	1,527	1,300	0,400	1,750	1,230
	Over 24,0	38°	1,542	1,300	0,400	1,750	1,230

## Narrow wedge belt pulleys

Belt series	Pitch Diameter Range	Groove Angle		Dimensions			
		a	W	W <sub>b</sub>	D	X	S
		°	Inches	Inches	Inches	Inches	Inches
3V	Under 3,5	36°	0,350	0,350	0,025	0,407	0,344
	3,5 - 6	38°	0,350	0,350	0,025	0,407	0,344
	6,01 - 12	40°	0,350	0,350	0,025	0,407	0,344
	Over 12	42°	0,350	0,350	0,025	0,407	0,344
5V	Under 10	38°	0,600	0,050	0,050	0,688	0,500
	10 - 16	40°	0,600	0,050	0,050	0,688	0,500
	Over 16	42°	0,600	0,050	0,050	0,688	0,500
8V	Under 16	38°	1,000	1,000	0,100	1,125	0,750
	16 - 22,4	40°	1,000	1,000	0,100	1,125	0,750
	Over 22,4	42°	1,000	1,000	0,100	1,125	0,750



# Wedge belt pulleys

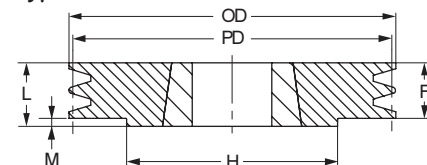
SPZ taper bushed

- ▶ ..... Belts
- ▶ ..... Chains
- ▶ ..... Couplings
- ▶ ..... Bushings and Hubs
- ▶ ..... Sprockets
- ▶ ..... Pulleys
- ▶ ..... Smart tools

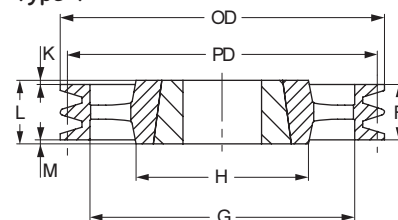
## 1 Groove SPZ

Pitch Diameter	OD	Pulley Type	Bush No.	Bore		F	G	K	L	M	H	Weight*	Designation
				Min	Max								
mm	mm			mm	mm	mm	mm	mm	mm	mm	mm	kg	
50	54	9	1008	9	25	37	28	15,0	22	-	-	0,3	PHP 1SPZ50TB
56	60	9	1008	9	25	37	23	15,0	22	-	-	0,5	PHP 1SPZ56TB
60	64	9	1008	9	25	22	-	-	22	-	-	0,3	PHP 1SPZ60TB
63	67	1	1108	9	28	16	-	-	22	6,0	62	0,3	PHP 1SPZ63TB
67	71	1	1108	9	28	16	-	-	22	6,0	62	0,3	PHP 1SPZ67TB
71	75	1	1108	9	28	16	-	-	22	6,0	62	0,4	PHP 1SPZ71TB
75	79	1	1108	9	28	16	-	-	22	6,0	62	0,4	PHP 1SPZ75TB
80	84	1	1210	11	32	16	-	-	25	9,0	75	0,5	PHP 1SPZ80TB
85	89	1	1210	11	32	16	-	-	25	9,0	75	0,7	PHP 1SPZ85TB
90	94	1	1210	11	32	16	-	-	25	9,0	75	0,7	PHP 1SPZ90TB
95	99	1	1210	11	32	16	-	-	25	9,0	75	0,8	PHP 1SPZ95TB
100	104	1	1210	11	32	16	-	-	25	9,0	75	0,9	PHP 1SPZ100TB
106	110	1	1610	14	42	16	-	-	25	9,0	80	1,0	PHP 1SPZ106TB
112	116	1	1610	14	42	16	-	-	25	9,0	80	1,1	PHP 1SPZ112TB
118	122	1	1610	14	42	16	-	-	25	9,0	80	1,2	PHP 1SPZ118TB
125	129	1	1610	14	42	16	-	-	25	9,0	80	1,3	PHP 1SPZ125TB
132	136	1	1610	14	42	16	-	-	25	9,0	80	1,5	PHP 1SPZ132TB
140	144	1	1610	14	42	16	-	-	25	9,0	80	1,7	PHP 1SPZ140TB
150	154	1	1610	14	42	16	-	-	25	9,0	80	2,0	PHP 1SPZ150TB
160	164	1	1610	14	42	16	-	-	25	9,0	80	2,2	PHP 1SPZ160TB
170	174	1	1610	14	42	16	-	-	25	9,0	80	2,2	PHP 1SPZ170TB
180	184	1	1610	14	42	16	-	-	25	9,0	80	2,1	PHP 1SPZ180TB
190	194	8	1610	14	42	16	161	-	25	9,0	80	2,7	PHP 1SPZ190TB
200	204	8	2012	14	50	16	172	-	32	16,0	100	3,4	PHP 1SPZ200TB
224	228	8	2012	14	50	16	196	-	32	16,0	100	3,6	PHP 1SPZ224TB
250	254	4	2012	14	50	16	222	8,0	32	8,0	100	4,6	PHP 1SPZ250TB
280	284	4	2012	14	50	16	252	8,0	32	8,0	100	5,5	PHP 1SPZ280TB
315	319	4	2012	14	50	16	287	8,0	32	8,0	100	6,7	PHP 1SPZ315TB
355	359	4	2012	14	50	16	326	8,0	32	8,0	112	6,8	PHP 1SPZ355TB
400	404	4	2012	14	50	16	371	8,0	32	8,0	112	6,9	PHP 1SPZ400TB
450	454	4	2517	16	60	16	421	14,5	45	14,5	120	7,2	PHP 1SPZ450TB

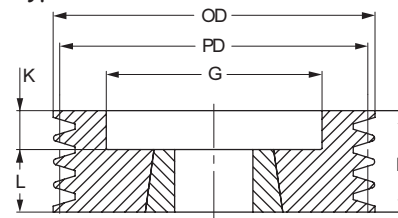
Type 1



Type 4



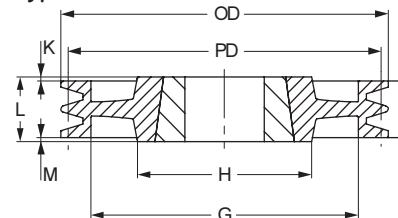
Type 6



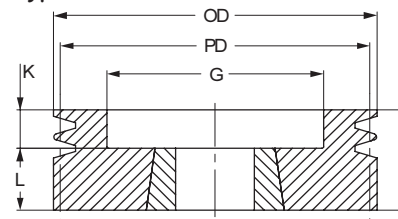
## 2 Groove SPZ

Pitch Diameter	OD	Pulley Type	Bush No.	Bore		F	G	K	L	M	H	Weight*	Designation
				Min	Max								
mm	mm			mm	mm	mm	mm	mm	mm	mm	mm	kg	
50	54	9	1008	9	25	49	28	27,0	22	-	-	0,4	PHP 2SPZ50TB
56	60	9	1008	9	25	49	35	27,0	22	-	-	0,5	PHP 2SPZ56TB
60	64	9	1108	9	25	49	36	27,0	22	-	-	0,7	PHP 2SPZ60TB
63	67	6	1108	9	28	28	40	6,0	22	-	-	0,3	PHP 2SPZ63TB
67	71	6	1108	9	28	28	42	6,0	22	-	-	0,4	PHP 2SPZ67TB
71	75	6	1108	9	28	28	42	6,0	22	-	-	0,5	PHP 2SPZ71TB
75	79	6	1210	11	32	28	51	3,0	25	-	-	0,5	PHP 2SPZ75TB
80	84	6	1210	11	32	28	51	3,0	25	-	-	0,6	PHP 2SPZ80TB
85	89	6	1610	14	42	28	60	3,0	25	-	-	0,6	PHP 2SPZ85TB
90	94	6	1610	14	42	28	61	3,0	25	-	-	0,7	PHP 2SPZ90TB
95	99	6	1610	14	42	28	66	3,0	25	-	-	0,8	PHP 2SPZ95TB
100	104	6	1610	14	42	28	71	3,0	25	-	-	0,9	PHP 2SPZ100TB
106	110	6	1610	14	42	28	76	3,0	25	-	-	1,1	PHP 2SPZ106TB
112	116	6	1610	14	42	28	84	3,0	25	-	-	1,3	PHP 2SPZ112TB
118	122	6	1610	14	42	28	90	3,0	25	-	-	1,5	PHP 2SPZ118TB
125	129	6	1610	14	42	28	97	3,0	25	-	-	1,7	PHP 2SPZ125TB
132	136	6	1610	14	42	28	104	3,0	25	-	-	2,0	PHP 2SPZ132TB
140	144	6	1610	14	42	28	112	3,0	25	-	-	2,4	PHP 2SPZ140TB
150	154	1	2012	14	50	28	-	-	32	4,0	100	2,6	PHP 2SPZ150TB
160	164	1	2012	14	50	28	-	-	32	4,0	100	3,1	PHP 2SPZ160TB
170	174	1	2012	14	50	28	-	-	32	4,0	100	2,8	PHP 2SPZ170TB
180	184	8	2012	14	50	28	152	-	32	4,0	100	2,9	PHP 2SPZ180TB
190	194	8	2012	14	50	28	161	-	32	4,0	100	3,1	PHP 2SPZ190TB
200	204	8	2012	14	50	28	171	-	32	4,0	100	3,4	PHP 2SPZ200TB
224	228	8	2012	14	50	28	196	-	32	4,0	100	4,5	PHP 2SPZ224TB
250	254	4	2012	14	50	28	222	2,0	32	2,0	100	5,4	PHP 2SPZ250TB
280	284	4	2012	14	50	28	252	2,0	32	2,0	100	6,2	PHP 2SPZ280TB
315	319	4	2012	14	50	28	286	2,0	32	2,0	100	7,2	PHP 2SPZ315TB
355	359	4	2012	14	50	28	326	2,0	32	2,0	112	8,6	PHP 2SPZ355TB
400	404	4	2517	16	60	28	371	8,5	45	8,5	120	9,9	PHP 2SPZ400TB
450	454	4	2517	16	60	28	421	8,5	45	8,5	120	11,2	PHP 2SPZ450TB

Type 8



Type 9



Dimensions in mm unless otherwise stated

\* Weights do not include bushings

Non-functional dimensions may vary slightly



# Wedge belt pulleys

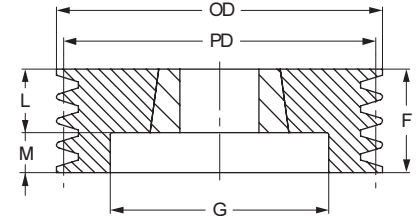
SPZ taper bushed



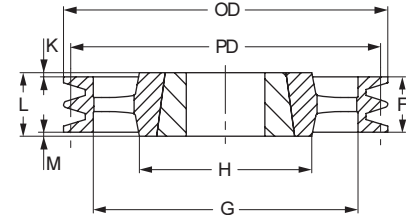
## 3 Groove SPZ

Pitch Diameter	OD	Pulley Type	Bush No.	Bore		F	G	K	L	M	H	Weight*	Designation
				Min	Max								
mm	mm			mm	mm	mm	mm	mm	mm	mm	mm	kg	
63	67	6	1108	9	28	40	40	18,0	22	-	-	0,4	PHP 3SPZ63TB
67	71	6	1108	9	28	40	42	18,0	22	-	-	0,5	PHP 3SPZ67TB
71	75	6	1108	9	28	40	42	18,0	22	-	-	0,6	PHP 3SPZ71TB
75	79	6	1210	11	32	40	48	15,0	25	-	-	0,7	PHP 3SPZ75TB
80	84	6	1210	11	32	40	51	15,0	25	-	-	0,7	PHP 3SPZ80TB
85	89	6	1610	14	42	40	60	15,0	25	-	-	0,8	PHP 3SPZ85TB
90	94	6	1610	14	42	40	61	15,0	25	-	-	0,9	PHP 3SPZ90TB
95	99	6	1610	14	42	40	66	15,0	25	-	-	1,0	PHP 3SPZ95TB
100	104	6	1610	14	42	40	71	15,0	25	-	-	1,1	PHP 3SPZ100TB
106	110	6	1610	14	42	40	78	15,0	25	-	-	1,4	PHP 3SPZ106TB
112	116	6	2012	14	50	40	84	8,0	32	-	-	1,4	PHP 3SPZ112TB
118	122	6	2012	14	50	40	92	8,0	32	-	-	1,7	PHP 3SPZ118TB
125	129	2	2012	14	50	40	97	-	32	8,0	-	2,0	PHP 3SPZ125TB
132	136	2	2012	14	50	40	104	-	32	8,0	-	2,3	PHP 3SPZ132TB
140	144	2	2012	14	50	40	112	-	32	8,0	-	2,7	PHP 3SPZ140TB
150	154	2	2012	14	50	40	122	-	32	8,0	-	3,3	PHP 3SPZ150TB
160	164	2	2012	14	50	40	132	-	32	8,0	-	3,9	PHP 3SPZ160TB
170	174	2	2012	14	50	40	141	-	32	4,0	-	3,2	PHP 3SPZ170TB
180	184	2	2012	14	50	40	152	-	32	8,0	-	3,4	PHP 3SPZ180TB
190	194	7	2012	14	50	40	161	4,0	32	4,0	100	3,4	PHP 3SPZ190TB
200	204	7	2012	14	50	40	172	4,0	32	4,0	100	3,9	PHP 3SPZ200TB
224	228	7	2012	14	50	40	196	4,0	32	4,0	100	5,4	PHP 3SPZ224TB
250	254	5	2012	14	50	40	222	4,0	32	4,0	100	6,4	PHP 3SPZ250TB
280	284	4	2517	16	60	40	252	2,5	45	2,5	120	8,3	PHP 3SPZ280TB
315	319	4	2517	16	60	40	287	2,5	45	2,5	120	10,1	PHP 3SPZ315TB
355	359	4	2517	16	60	40	326	2,5	45	2,5	120	11,7	PHP 3SPZ355TB
400	404	4	2517	16	60	40	371	2,5	45	2,5	120	13,3	PHP 3SPZ400TB
450	454	4	2517	16	60	40	421	2,5	45	2,5	120	14,6	PHP 3SPZ450TB
500	504	4	2517	16	60	40	471	2,5	45	2,5	120	15,8	PHP 3SPZ500TB
630	634	4	2517	16	60	40	601	5,5	45	2,5	120	17,0	PHP 3SPZ630TB
800	804	4	3020	25	75	40	771	5,5	51	2,5	150	33,0	PHP 3SPZ800TB

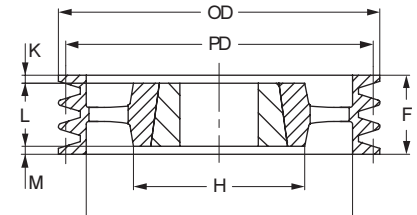
Type 2



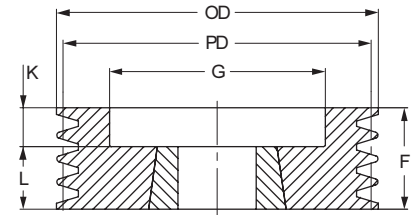
Type 4



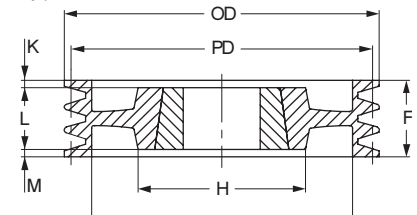
Type 5



Type 6



Type 7



## 4 Groove SPZ

Pitch Diameter	OD	Pulley Type	Bush No.	Bore		F	G	K	L	M	H	Weight*	Designation
				Min	Max								
mm	mm			mm	mm	mm	mm	mm	mm	mm	mm	kg	
63	67	6	1108	9	28	52	38	30,0	22	-	-	0,5	PHP 4SPZ63TB
67	71	6	1108	9	28	52	41	30,0	22	-	-	0,6	PHP 4SPZ67TB
71	75	6	1108	9	28	52	45	30,0	22	-	-	0,7	PHP 4SPZ71TB
75	79	6	1210	11	32	52	46	27,0	25	-	-	0,8	PHP 4SPZ75TB
80	84	6	1210	11	32	52	51	27,0	25	-	-	0,9	PHP 4SPZ80TB
85	89	6	1610	14	42	52	60	27,0	25	-	-	1,0	PHP 4SPZ85TB
90	94	6	1610	14	42	52	61	27,0	25	-	-	1,1	PHP 4SPZ90TB
95	99	6	1610	14	42	52	66	27,0	25	-	-	1,3	PHP 4SPZ95TB
100	104	6	1610	14	42	52	72	27,0	25	-	-	1,4	PHP 4SPZ100TB
106	110	6	1610	14	42	52	80	27,0	25	-	-	1,6	PHP 4SPZ106TB
112	116	6	2012	14	50	52	86	20,0	32	-	-	1,7	PHP 4SPZ112TB
118	122	6	2012	14	50	52	92	20,0	32	-	-	2,0	PHP 4SPZ118TB
125	129	2	2012	14	50	52	99	-	32	20,0	-	2,3	PHP 4SPZ125TB
132	136	2	2012	14	50	52	104	-	32	20,0	-	2,6	PHP 4SPZ132TB
140	144	2	2012	14	50	52	112	-	32	20,0	-	3,1	PHP 4SPZ140TB
150	154	2	2517	16	60	52	122	-	45	7,0	-	3,8	PHP 4SPZ150TB
160	164	2	2517	16	60	52	132	-	45	7,0	-	4,6	PHP 4SPZ160TB
170	174	2	2517	16	65	52	141	-	45	7,0	-	5,5	PHP 4SPZ170TB
180	184	2	2517	16	60	52	152	-	45	7,0	-	6,3	PHP 4SPZ180TB
190	194	7	2517	16	65	52	161	3,5	45	3,5	120	5,3	PHP 4SPZ190TB
200	204	7	2517	16	60	52	172	3,5	45	3,5	120	5,4	PHP 4SPZ200TB
224	228	7	2517	16	60	52	196	3,5	45	3,5	120	7,0	PHP 4SPZ224TB
250	254	7	2517	16	60	52	222	3,5	45	3,5	120	8,0	PHP 4SPZ250TB
280	284	7	2517	16	60	52	252	3,5	45	3,5	120	9,5	PHP 4SPZ280TB
315	319	7	2517	16	60	52	287	3,5	45	3,5	120	12,1	PHP 4SPZ315TB
355	359	5	2517	16	60	52	326	3,5	45	3,5	120	12,8	PHP 4SPZ355TB
400	404	5	2517	16	60	52	371	3,5	45	3,5	120	13,6	PHP 4SPZ400TB
450	454	5	3020	25	75	52	421	0,5	51	0,5	150	14,5	PHP 4SPZ450TB
500	504	5	3020	25	75	52	471	0,5	51	0,5	150	17,3	PHP 4SPZ500TB
630	634	4	3020	25	75	52	601	12,0	76	12,0	150	23,0	PHP 4SPZ630TB
800	804	4	3030	35	75	52	771	12,0	76	12,0	150	36,0	PHP 4SPZ800TB

Dimensions in mm unless otherwise stated

\* Weights do not include bushings

Non-functional dimensions may vary slightly



# Wedge belt pulleys

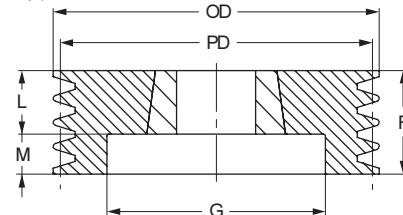
SPZ taper bushed

- ▶ ..... Belts
- ▶ ..... Chains
- ▶ ..... Couplings
- ▶ ..... Bushings and Hubs
- ▶ ..... Sprockets
- ▶ ..... Pulleys
- ▶ ..... Smart tools

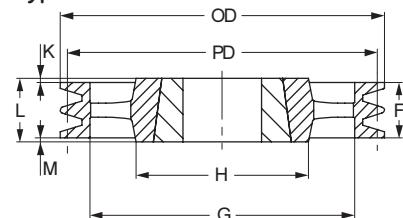
## 5 Groove SPZ

Pitch Diameter	OD	Pulley Type	Bush No.	Bore		F	G	K	L	M	H	Weight*	Designation
				Min	Max								
mm	mm			mm	mm	mm	mm	mm	mm	mm	mm	kg	
85	89	6	1610	14	42	64	60	39,0	25	-	-	1,3	PHP 5SPZ85TB
90	94	6	1610	14	42	64	61	39,0	25	-	-	1,3	PHP 5SPZ90TB
95	99	6	1610	14	42	64	66	39,0	25	-	-	1,5	PHP 5SPZ95TB
100	104	6	2012	14	50	64	72	32,0	32	-	-	1,6	PHP 5SPZ100TB
106	110	6	2012	14	50	64	78	32,0	32	-	-	1,8	PHP 5SPZ106TB
112	116	6	2012	14	50	64	84	32,0	32	-	-	2,0	PHP 5SPZ112TB
118	122	6	2012	14	50	64	90	32,0	32	-	-	2,3	PHP 5SPZ118TB
125	129	6	2012	14	50	64	97	32,0	32	-	-	2,7	PHP 5SPZ125TB
132	136	6	2517	16	60	64	104	19,0	45	-	-	2,8	PHP 5SPZ132TB
140	144	2	2517	16	60	64	112	-	45	19,0	-	3,4	PHP 5SPZ140TB
150	154	2	2517	16	60	64	122	-	45	19,0	-	4,3	PHP 5SPZ150TB
160	164	2	2517	16	60	64	132	-	45	19,0	-	5,1	PHP 5SPZ160TB
170	174	2	2517	16	60	64	141	-	45	19,0	-	5,7	PHP 5SPZ170TB
180	184	2	2517	16	60	64	152	-	45	19,0	-	6,8	PHP 5SPZ180TB
190	194	7	2517	16	60	64	161	9,5	45	9,5	-	7,8	PHP 5SPZ190TB
200	204	7	2517	16	60	64	172	9,5	45	9,5	-	8,8	PHP 5SPZ200TB
224	228	7	2517	16	60	64	196	9,5	45	9,5	120	8,8	PHP 5SPZ224TB
250	254	5	2517	16	60	64	222	9,5	45	9,5	120	9,0	PHP 5SPZ250TB
280	284	5	2517	16	60	64	252	9,5	45	9,5	120	11,0	PHP 5SPZ280TB
315	319	5	2517	16	60	64	287	9,5	45	9,5	120	13,3	PHP 5SPZ315TB
355	359	5	2517	16	60	64	326	9,5	45	9,5	120	13,0	PHP 5SPZ355TB
400	404	5	3020	25	75	64	371	6,5	51	6,5	150	15,6	PHP 5SPZ400TB
450	454	5	3020	25	75	64	421	6,5	51	6,5	150	19,0	PHP 5SPZ450TB
500	504	4	3020	25	75	64	471	6,0	51	6,0	150	22,6	PHP 5SPZ500TB
630	634	4	3020	25	75	64	601	6,0	51	6,0	150	29,0	PHP 5SPZ630TB
800	804	4	3535	35	90	64	771	12,5	89	12,5	170	44,1	PHP 5SPZ800TB

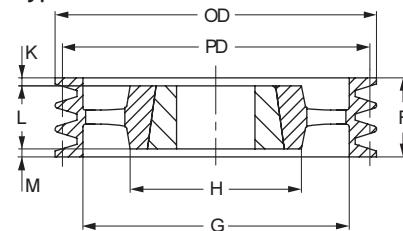
Type 2



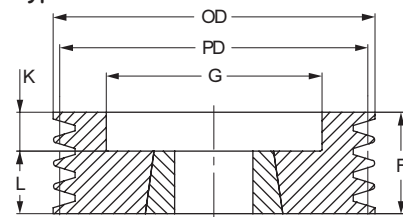
Type 4



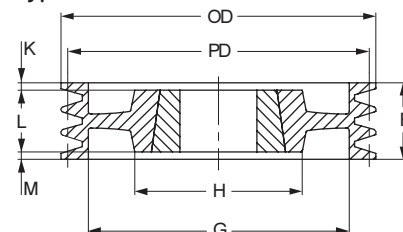
Type 5



Type 6



Type 7



## 6 Groove SPZ

Pitch Diameter	OD	Pulley Type	Bush No.	Bore		F	G	K	L	M	H	Weight*	Designation
				Min	Max								
mm	mm			mm	mm	mm	mm	mm	mm	mm	mm	kg	
85	89	6	1610	14	42	76	61	51,0	25	-	-	1,3	PHP 6SPZ85TB
90	94	6	1610	14	42	76	61	51,0	25	-	-	1,5	PHP 6SPZ90TB
95	99	6	1610	14	42	76	66	51,0	25	-	-	1,7	PHP 6SPZ95TB
100	104	6	2012	14	50	76	72	44,0	32	-	-	1,9	PHP 6SPZ100TB
106	110	6	2012	14	50	76	78	44,0	32	-	-	2,0	PHP 6SPZ106TB
112	116	6	2012	14	50	76	84	44,0	32	-	-	2,3	PHP 6SPZ112TB
118	122	6	2517	16	60	76	90	31,0	45	-	-	2,3	PHP 6SPZ118TB
125	129	6	2517	16	60	76	97	31,0	45	-	-	2,7	PHP 6SPZ125TB
132	136	6	2517	16	60	76	104	31,0	45	-	-	3,2	PHP 6SPZ132TB
140	144	2	2517	16	60	76	112	-	45	31,0	-	3,8	PHP 6SPZ140TB
150	154	2	2517	16	60	76	122	-	45	31,0	-	4,6	PHP 6SPZ150TB
160	164	2	2517	16	60	76	132	-	45	31,0	-	5,5	PHP 6SPZ160TB
170	174	2	2517	16	65	76	141	-	45	31,0	-	6,5	PHP 6SPZ170TB
180	184	2	2517	16	60	76	152	-	45	31,0	-	7,3	PHP 6SPZ180TB
190	194	7	2517	16	65	76	161	15,5	45	15,5	120	8,4	PHP 6SPZ190TB
200	204	7	2517	16	60	76	172	15,5	45	15,5	120	9,4	PHP 6SPZ200TB
224	228	7	2517	16	60	76	196	15,5	45	15,5	120	9,7	PHP 6SPZ224TB
250	254	5	2517	16	60	76	222	15,5	45	15,5	120	11,8	PHP 6SPZ250TB
280	284	5	2517	16	60	76	252	15,5	45	15,5	120	12,8	PHP 6SPZ280TB
315	319	5	2517	16	60	76	287	15,5	45	15,5	120	13,8	PHP 6SPZ315TB
355	359	5	2517	16	60	76	326	15,5	45	15,5	125	15,0	PHP 6SPZ355TB
400	404	5	3030	25	75	76	371	-	76	-	150	18,3	PHP 6SPZ400TB
450	454	5	3030	25	75	76	421	-	76	-	150	21,5	PHP 6SPZ450TB
500	504	5	3030	25	75	76	471	-	76	-	150	24,6	PHP 6SPZ500TB
630	634	4	3525	35	90	76	601	6,5	89	6,5	170	35,0	PHP 6SPZ630TB
800	804	4	3535	35	90	76	771	6,5	89	6,5	170	57,9	PHP 6SPZ800TB

Dimensions in mm unless otherwise stated

\* Weights do not include bushings

Non-functional dimensions may vary slightly



# Wedge belt pulleys

SPZ taper bushed



## 8 Groove SPZ

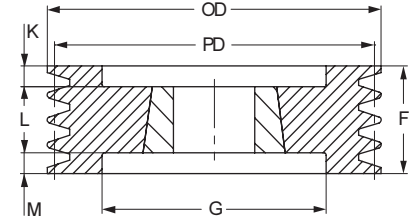
Pitch Diameter	OD	Pulley Type	Bush No.	Bore		F	G	K	L	M	H	Weight*	Designation
				Min	Max								
140	144	3	2517	16	60	100	112	27,5	45	27,5	-	4,0	PHP 8SPZ140TB
150	154	3	2517	16	60	100	122	27,5	45	27,5	-	5,1	PHP 8SPZ150TB
160	164	3	2517	16	60	100	132	27,5	45	27,5	-	5,6	PHP 8SPZ160TB
180	184	3	3020	25	75	100	152	27,5	45	27,5	-	7,1	PHP 8SPZ180TB
200	204	3	3020	25	75	100	171	24,5	51	24,5	-	9,3	PHP 8SPZ200TB
224	228	3	3020	25	75	100	195	24,5	51	24,5	-	11,8	PHP 8SPZ224TB
250	254	7	3020	25	75	100	221	24,5	51	24,5	150	10,5	PHP 8SPZ250TB
280	284	5	3020	25	75	100	252	24,5	51	24,5	150	10,8	PHP 8SPZ280TB
355	359	5	3030	35	75	100	326	12,0	76	12,0	150	16,0	PHP 8SPZ355TB
400	404	5	3030	35	75	100	371	12,0	76	12,0	150	18,2	PHP 8SPZ400TB
450	454	5	3535	35	90	100	421	5,5	89	5,5	170	24,0	PHP 8SPZ450TB

Dimensions in mm unless otherwise stated

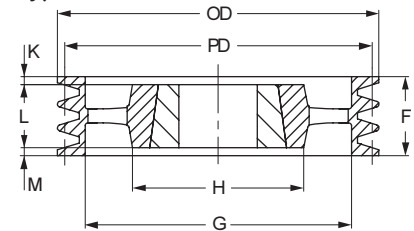
\* Weights do not include bushings

Non-functional dimensions may vary slightly

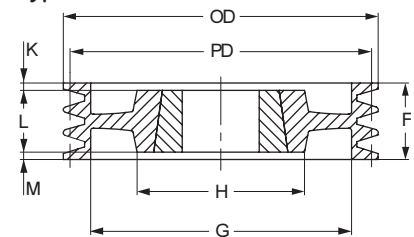
Type 3



Type 5



Type 7





# Wedge belt pulleys

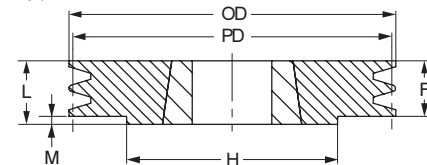
SPA taper bushed

- ▶ ..... Belts
- ▶ ..... Chains
- ▶ ..... Couplings
- ▶ ..... Bushings and Hubs
- ▶ ..... Sprockets
- ▶ ..... Pulleys
- ▶ ..... Smart tools

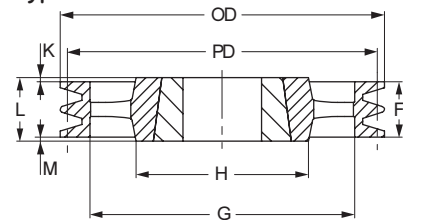
## 1 Groove SPA

Pitch Diameter	OD	Pulley Type	Bush No.	Bore		F	G	K	L	M	H	Weight*	Designation
				Min	Max								
mm	mm			mm	mm	mm	mm	mm	mm	mm	mm	kg	
63	68,5	9	1008	9	25	40	38	18	22	-	-	0,8	PHP 1SPA63TB
67	72,5	1	1108	9	28	20	-	-	22	2	62	0,5	PHP 1SPA67TB
71	76,5	1	1108	9	28	20	-	-	22	2	62	0,5	PHP 1SPA71TB
75	80,5	1	1108	9	28	22	-	-	22	2	62	0,4	PHP 1SPA75TB
80	85,5	1	1210	11	32	20	-	-	25	5	75	0,5	PHP 1SPA80TB
85	90,5	1	1210	11	32	20	-	-	25	5	75	0,6	PHP 1SPA85TB
90	95,5	1	1210	11	32	20	-	-	25	5	75	0,7	PHP 1SPA90TB
95	100,5	1	1210	11	32	20	-	-	25	5	75	0,9	PHP 1SPA95TB
100	105,5	1	1610	14	42	20	-	-	25	5	80	0,8	PHP 1SPA100TB
106	111,5	1	1610	14	42	20	-	-	25	5	80	0,9	PHP 1SPA106TB
112	117,5	1	1610	14	42	20	-	-	25	5	80	1,1	PHP 1SPA112TB
118	123,5	1	1610	14	42	20	-	-	25	5	80	1,2	PHP 1SPA118TB
125	130,5	1	1610	14	42	20	-	-	25	5	80	1,4	PHP 1SPA125TB
132	137,5	1	1610	14	42	20	-	-	25	5	80	1,6	PHP 1SPA132TB
140	145,5	1	1610	14	42	20	-	-	25	5	80	1,8	PHP 1SPA140TB
150	155,5	1	1610	14	42	20	-	-	25	5	80	2,1	PHP 1SPA150TB
160	165,5	1	1610	14	42	20	-	-	25	5	80	2,4	PHP 1SPA160TB
170	175,5	1	1610	14	42	20	-	-	25	5	80	1,1	PHP 1SPA170TB
180	185,5	1	1610	14	42	20	-	-	25	5	80	2,3	PHP 1SPA180TB
190	195,5	1	1610	14	42	20	-	-	25	5	80	2,7	PHP 1SPA190TB
200	205,5	8	2012	14	50	20	165	6	32	6	100	2,3	PHP 1SPA200TB
212	217,5	8	2012	14	50	20	177	6	32	6	100	3,5	PHP 1SPA212TB
224	229,5	8	2012	14	50	20	189	6	32	6	100	4,0	PHP 1SPA224TB
250	255,5	8	2012	14	50	20	215	6	32	6	100	4,8	PHP 1SPA250TB
280	285,5	8	2012	14	50	20	245	6	32	6	100	6,3	PHP 1SPA280TB
315	320,5	8	2012	14	50	20	280	6	32	6	100	7,2	PHP 1SPA315TB
355	360,5	4	2012	14	50	20	320	6	32	6	100	7,6	PHP 1SPA355TB
400	405,5	4	2012	14	50	20	365	6	32	6	100	7,9	PHP 1SPA400TB
450	455,5	4	2012	16	60	20	415	6	32	6	100	8,4	PHP 1SPA450TB
500	505,5	4	2517	16	60	20	465	-	45	25	120	9,4	PHP 1SPA500TB
630	635,5	4	2517	16	60	20	595	-	45	25	120	13,1	PHP 1SPA630TB

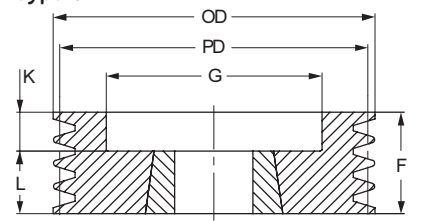
Type 1



Type 4



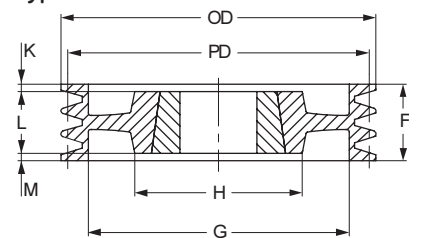
Type 6



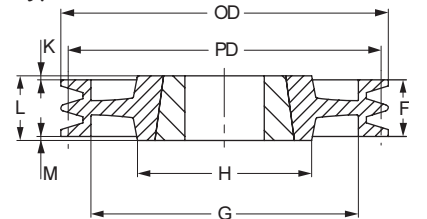
## 2 Groove SPA

Pitch Diameter	OD	Pulley Type	Bush No.	Bore		F	G	K	L	M	H	Weight*	Designation
				Min	Max								
mm	mm			mm	mm	mm	mm	mm	mm	mm	mm	kg	
63	68,5	9	1008	9	28	55	36	33	22	-	-	0,6	PHP 2SPA63TB
67	72,5	6	1108	9	28	35	37	13	22	-	-	0,4	PHP 2SPA67TB
71	76,5	6	1108	9	28	35	40	13	22	-	-	0,5	PHP 2SPA71TB
75	80,5	6	1108	9	28	35	44	10	25	-	-	0,7	PHP 2SPA75TB
80	85,5	6	1210	11	32	35	47	10	25	-	-	0,6	PHP 2SPA80TB
85	90,5	6	1210	11	32	35	50	10	25	-	-	0,7	PHP 2SPA85TB
90	95,5	6	1610	14	42	35	60	10	25	-	-	0,7	PHP 2SPA90TB
95	100,5	6	1610	14	42	35	64	10	25	-	-	0,9	PHP 2SPA95TB
100	105,5	6	1610	14	42	35	70	10	25	-	-	1,1	PHP 2SPA100TB
106	111,5	6	1610	14	42	35	76	10	25	-	-	1,2	PHP 2SPA106TB
112	117,5	6	1610	14	42	35	80	10	25	-	-	1,4	PHP 2SPA112TB
118	123,5	6	1610	14	42	35	86	10	25	-	-	1,6	PHP 2SPA118TB
125	130,5	6	1610	14	42	35	90	10	25	-	-	1,9	PHP 2SPA125TB
132	137,5	6	2012	14	50	35	98	3	32	-	-	2,1	PHP 2SPA132TB
140	145,5	6	2012	14	50	35	106	3	32	-	-	2,6	PHP 2SPA140TB
150	155,5	6	2012	14	50	35	116	3	32	-	-	3,2	PHP 2SPA150TB
160	165,5	6	2012	14	50	35	125	3	32	-	-	3,8	PHP 2SPA160TB
170	175,5	6	2012	14	50	35	135	3	32	-	-	4,5	PHP 2SPA170TB
180	185,5	7	2012	14	50	35	148	1,5	32	1,5	100	5,2	PHP 2SPA180TB
190	195,5	7	2012	14	50	35	158	1,5	32	1,5	100	4,4	PHP 2SPA190TB
200	205,5	8	2517	16	60	35	165	5	45	5	120	4,9	PHP 2SPA200TB
212	217,5	8	2517	16	60	35	177	5	45	5	120	5,8	PHP 2SPA212TB
224	229,5	8	2517	16	60	35	189	-	45	10	120	6,6	PHP 2SPA224TB
250	255,5	8	2517	16	60	35	215	5	45	5	120	6,8	PHP 2SPA250TB
280	285,5	8	2517	16	60	35	245	-	45	10	120	8,3	PHP 2SPA280TB
315	320,5	8	2517	16	60	35	280	-	45	10	120	10,2	PHP 2SPA315TB
355	360,5	4	2517	16	60	35	320	-	45	10	120	10,5	PHP 2SPA355TB
400	405,5	4	2517	16	60	35	365	-	45	10	120	11,3	PHP 2SPA400TB
450	455,5	4	2517	16	60	35	465	-	45	10	120	15,0	PHP 2SPA450TB
500	505,5	4	2517	16	60	35	525	-	51	16	150	18,7	PHP 2SPA500TB
630	635,5	4	3020	25	75	35	595	-	51	16	150	22,0	PHP 2SPA630TB

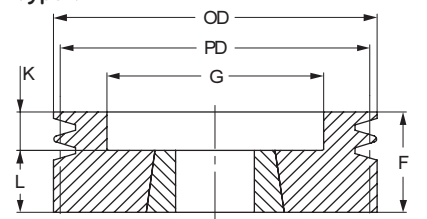
Type 7



Type 8



Type 9



Dimensions in mm unless otherwise stated

\* Weights do not include bushings

Non-functional dimensions may vary slightly



# Wedge belt pulleys

SPA taper bushed



## 3 Groove SPA

Pitch Diameter	OD	Pulley Type	Bush No.	Bore		F	G	K	L	M	H	Weight*	Designation
				Min	Max								
mm	mm			mm	mm	mm	mm	mm	mm	mm	mm	kg	
71	76,5	6	1108	9	28	50	40	28,0	22	-	-	0,7	PHP 3SPA71TB
75	80,5	6	1210	11	32	50	44	25,0	25	-	-	0,8	PHP 3SPA75TB
80	85,5	6	1210	11	32	50	47	25,0	25	-	-	0,9	PHP 3SPA80TB
85	90,5	6	1210	11	32	50	50	25,0	25	-	-	1,0	PHP 3SPA85TB
90	95,5	6	1610	14	42	50	60	25,0	25	-	-	1,0	PHP 3SPA90TB
95	100,5	6	1610	14	42	50	64	25,0	25	-	-	1,2	PHP 3SPA95TB
100	105,5	2	1610	14	42	50	70	-	25	25,0	-	1,3	PHP 3SPA100TB
106	111,5	2	1610	14	42	50	76	-	25	25,0	-	1,6	PHP 3SPA106TB
112	117,5	6	2012	14	50	50	83	18,0	32	-	-	1,6	PHP 3SPA112TB
118	123,5	2	2012	14	50	50	86	-	32	18,0	-	1,9	PHP 3SPA118TB
125	130,5	2	2012	14	50	50	92	-	32	18,0	-	2,3	PHP 3SPA125TB
132	137,5	2	2012	14	50	50	98	-	32	18,0	-	2,6	PHP 3SPA132TB
140	145,5	6	2517	16	60	50	106	5,0	45	-	-	2,9	PHP 3SPA140TB
150	155,5	6	2517	16	60	50	116	5,0	45	-	-	3,7	PHP 3SPA150TB
160	165,5	6	2517	16	60	50	126	5,0	45	-	-	4,5	PHP 3SPA160TB
170	175,5	6	2517	16	60	50	138	5,0	45	-	-	5,0	PHP 3SPA170TB
180	185,5	6	2517	16	60	50	146	5,0	45	-	-	6,2	PHP 3SPA180TB
190	195,5	6	2517	16	60	50	158	5,0	45	-	-	7,0	PHP 3SPA190TB
200	205,5	7	2517	16	60	50	165	2,5	45	2,5	120	5,6	PHP 3SPA200TB
212	217,5	7	2517	16	60	50	177	2,5	45	2,5	120	6,6	PHP 3SPA212TB
224	229,5	7	2517	16	60	50	189	2,5	45	2,5	120	7,5	PHP 3SPA224TB
250	255,5	7	2517	16	60	50	215	2,5	45	2,5	120	8,6	PHP 3SPA250TB
280	285,5	7	2517	16	60	50	245	2,5	45	2,5	120	10,0	PHP 3SPA280TB
315	320,5	8	3020	25	75	50	280	0,5	51	0,5	160	12,8	PHP 3SPA315TB
355	360,5	4	3020	25	75	50	320	0,5	51	0,5	150	13,4	PHP 3SPA355TB
400	405,5	4	3020	25	75	50	365	0,5	51	0,5	150	15,9	PHP 3SPA400TB
450	455,5	4	3020	25	75	50	415	0,5	51	0,5	150	19,3	PHP 3SPA450TB
500	505,5	4	3020	25	75	50	465	0,5	51	0,5	150	22,6	PHP 3SPA500TB
560	565,5	4	3020	25	75	50	525	0,5	51	0,5	150	23,5	PHP 3SPA560TB
630	635,5	4	3020	25	75	50	595	0,5	51	0,5	150	27,5	PHP 3SPA630TB
800	805,5	4	3535	35	90	50	765	19,5	89	19,5	170	40,8	PHP 3SPA800TB
1000	1005,5	4	3535	35	90	50	965	19,5	89	19,5	178	50,0	PHP 3SPA1000TB

## 4 Groove SPA

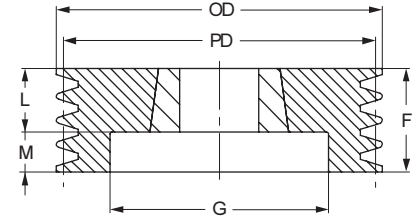
Pitch Diameter	OD	Pulley Type	Bush No.	Bore		F	G	K	L	M	H	Weight*	Designation
				Min	Max								
mm	mm			mm	mm	mm	mm	mm	mm	mm	mm	kg	
90	95,5	3	1615	14	42	65	64	13,5	38	13,5	-	1,2	PHP 4SPA90TB
95	100,5	3	1615	14	42	65	64	13,5	38	13,5	-	1,4	PHP 4SPA95TB
100	105,5	2	1615	14	42	65	70	-	38	27,0	-	1,6	PHP 4SPA100TB
106	111,5	6	2012	14	50	65	76	33,0	32	-	-	1,7	PHP 4SPA106TB
112	117,5	6	2012	14	50	65	80	33,0	32	-	-	2,0	PHP 4SPA112TB
118	123,5	2	2012	14	50	65	86	-	32	33,0	-	2,3	PHP 4SPA118TB
125	130,5	2	2012	14	50	65	92	-	32	33,0	-	2,7	PHP 4SPA125TB
132	137,5	2	2517	16	60	65	98	-	45	20,0	-	2,9	PHP 4SPA132TB
140	145,5	2	2517	16	60	65	106	-	45	20,0	-	3,5	PHP 4SPA140TB
150	155,5	2	2517	16	60	65	116	-	45	20,0	-	4,2	PHP 4SPA150TB
160	165,5	2	2517	16	60	65	126	-	45	20,0	-	5,1	PHP 4SPA160TB
170	175,5	2	2517	16	60	65	138	-	45	20,0	-	6,0	PHP 4SPA170TB
180	185,5	2	2517	16	60	65	146	-	45	20,0	-	6,9	PHP 4SPA180TB
190	195,5	2	2517	16	60	65	158	-	45	20,0	-	7,2	PHP 4SPA190TB
200	205,5	2	3020	25	75	65	165	-	51	14,0	-	8,4	PHP 4SPA200TB
212	217,5	2	3020	25	75	65	177	-	51	14,0	-	9,9	PHP 4SPA212TB
224	229,5	2	3020	25	75	65	189	-	51	14,0	-	11,4	PHP 4SPA224TB
250	255,5	7	3020	25	75	65	215	7,0	51	7,0	150	10,5	PHP 4SPA250TB
280	285,5	7	3020	25	75	65	245	7,0	51	7,0	150	11,6	PHP 4SPA280TB
315	320,5	7	3020	25	75	65	280	7,0	51	7,0	150	13,8	PHP 4SPA315TB
355	360,5	5	3020	25	75	65	320	7,0	51	7,0	150	15,8	PHP 4SPA355TB
400	405,5	5	3020	25	75	65	365	7,0	51	7,0	150	17,7	PHP 4SPA400TB
450	455,5	5	3020	25	75	65	415	7,0	51	7,0	150	23,2	PHP 4SPA450TB
500	505,5	5	3020	25	75	65	465	7,0	51	7,0	150	27,4	PHP 4SPA500TB
560	565,5	4	3535	35	90	65	525	12,0	89	12,0	170	30,5	PHP 4SPA560TB
630	635,5	4	3535	35	90	65	595	12,0	89	12,0	170	34,1	PHP 4SPA630TB
800	805,5	4	3535	35	90	65	765	12,0	89	12,0	170	50,8	PHP 4SPA800TB
1000	1005,5	4	4040	40	100	65	965	18,5	102	18,5	216	62,0	PHP 4SPA1000TB

Dimensions in mm unless otherwise stated

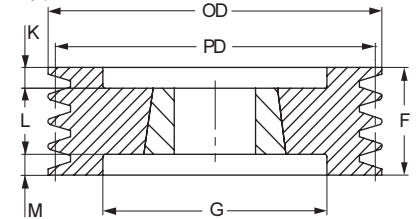
\* Weights do not include bushings

Non-functional dimensions may vary slightly

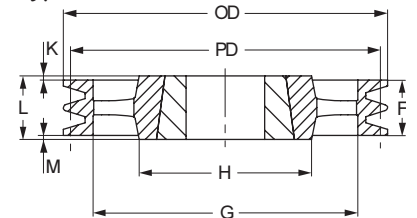
Type 2



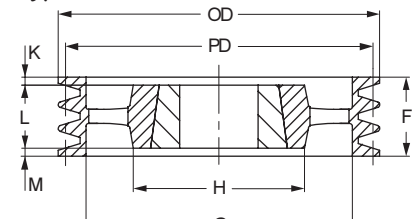
Type 3



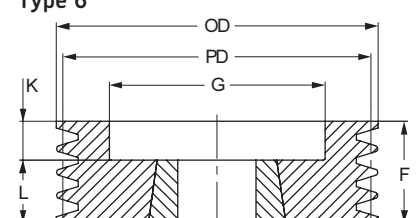
Type 4



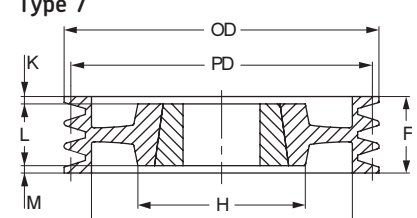
Type 5



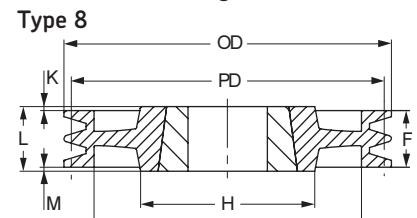
Type 6



Type 7



Type 8





# Wedge belt pulleys

SPA taper bushed

- ▶ . . . . . Belts
- ▶ . . . . . Chains
- ▶ . . . . . Couplings
- ▶ . . . . . Bushings and Hubs
- ▶ . . . . . Sprockets
- ▶ . . . . . Pulleys
- ▶ . . . . . Smart tools

## 5 Groove SPA

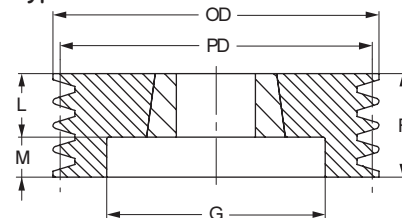
Pitch Diameter	OD	Pulley Type	Bush No.	Bore		F	G	K	L	M	H	Weight*	Designation
				Min	Max								
mm	mm			mm	mm	mm	mm	mm	mm	mm	mm	kg	
100	105,5	2	1615	14	42	80	70	-	38	42,0	-	1,9	PHP 5SPA100TB
106	111,5	6	2012	14	50	80	76	48,0	32	-	-	2,1	PHP 5SPA106TB
112	117,5	6	2012	14	50	80	80	48,0	32	-	-	2,4	PHP 5SPA112TB
118	123,5	2	2012	14	50	80	86	-	32	48,0	-	2,7	PHP 5SPA118TB
125	130,5	3	2012	14	50	80	92	24,0	32	24,0	-	3,1	PHP 5SPA125TB
132	137,5	3	2517	16	60	80	98	17,5	45	17,5	-	3,2	PHP 5SPA132TB
140	145,5	3	2517	16	60	80	106	17,5	45	17,5	-	3,9	PHP 5SPA140TB
150	155,5	3	2517	16	60	80	116	17,5	45	17,5	-	4,7	PHP 5SPA150TB
160	165,5	3	2517	16	60	80	126	17,5	45	17,5	-	5,6	PHP 5SPA160TB
170	175,5	3	2517	16	60	80	146	17,5	45	17,5	-	6,2	PHP 5SPA170TB
180	185,5	3	3020	25	75	80	165	14,5	51	14,5	-	6,8	PHP 5SPA180TB
190	195,5	2	3020	25	75	80	189	-	51	29,0	-	7,4	PHP 5SPA190TB
200	205,5	3	3020	25	75	80	215	14,5	51	14,5	-	9,1	PHP 5SPA200TB
212	217,5	2	3020	25	75	80	245	-	51	29,0	-	10,7	PHP 5SPA212TB
224	229,5	2	3020	25	75	80	280	-	51	29,0	-	12,3	PHP 5SPA224TB
250	255,5	7	3020	25	75	80	215	14,5	51	14,5	150	11,7	PHP 5SPA250TB
280	285,5	8	3535	35	90	80	245	4,5	89	4,5	170	17,4	PHP 5SPA280TB
315	320,5	8	3535	35	90	80	280	4,5	89	4,5	170	20,0	PHP 5SPA315TB
355	360,5	4	3535	35	90	80	320	4,5	89	4,5	170	22,8	PHP 5SPA355TB
400	405,5	4	3535	35	90	80	365	4,5	89	4,5	170	24,8	PHP 5SPA400TB
450	455,5	4	3535	35	90	80	415	4,5	89	4,5	170	28,5	PHP 5SPA450TB
500	505,5	4	3535	35	90	80	465	4,5	89	4,5	170	31,7	PHP 5SPA500TB
560	565,5	4	3535	35	90	80	525	4,5	89	4,5	170	35,0	PHP 5SPA560TB
630	635,5	4	3535	35	90	80	595	4,5	89	4,5	170	42,0	PHP 5SPA630TB
800	805,5	4	4030	40	100	80	765	11,0	102	11,0	216	60,0	PHP 5SPA800TB
1000	1005,5	4	4545	55	120	80	965	17,0	114	17,0	225	70,0	PHP 5SPA1000TB

## 6 Groove SPA

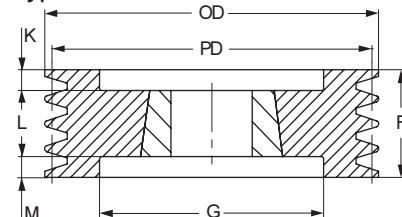
Pitch Diameter	OD	Pulley Type	Bush No.	Bore		F	G	K	L	M	H	Weight*	Designation
				Min	Max								
mm	mm			mm	mm	mm	mm	mm	mm	mm	mm	kg	
100	105,5	3	1610	14	42	95	70	28,5	38	28,5	-	2,2	PHP 6SPA100TB
106	111,5	6	2012	14	50	95	76	63,0	32	-	-	2,5	PHP 6SPA106TB
112	117,5	6	2012	14	50	95	80	63,0	32	-	-	2,8	PHP 6SPA112TB
118	123,5	6	2012	14	50	95	86	63,0	32	-	-	3,1	PHP 6SPA118TB
125	130,5	3	2012	14	50	95	92	31,5	32	31,5	-	3,7	PHP 6SPA125TB
132	137,5	3	2517	16	60	95	98	25,0	45	25,0	-	3,6	PHP 6SPA132TB
140	145,5	3	2517	16	60	95	106	25,0	45	25,0	-	4,5	PHP 6SPA140TB
150	155,5	3	2517	16	60	95	116	25,0	45	25,0	-	5,3	PHP 6SPA150TB
160	165,5	3	2517	16	60	95	126	25,0	45	25,0	-	6,3	PHP 6SPA160TB
170	175,5	3	3020	25	75	95	135	22,0	51	22,0	-	6,3	PHP 6SPA170TB
180	185,5	3	3020	25	75	95	146	22,0	51	22,0	-	7,5	PHP 6SPA180TB
190	195,5	3	3020	25	75	95	155	22,0	51	22,0	-	8,6	PHP 6SPA190TB
200	205,5	3	3020	25	75	95	165	22,0	51	22,0	-	9,9	PHP 6SPA200TB
212	217,5	3	3020	25	75	95	176	22,0	51	22,0	-	11,6	PHP 6SPA212TB
224	229,5	3	3020	25	75	95	189	22,0	51	22,0	-	13,2	PHP 6SPA224TB
250	255,5	7	3020	25	75	95	215	22,0	51	22,0	150	12,5	PHP 6SPA250TB
280	285,5	7	3535	35	90	95	245	3,0	89	3,0	170	19,0	PHP 6SPA280TB
315	320,5	7	3535	35	90	95	280	3,0	89	3,0	170	21,1	PHP 6SPA315TB
355	360,5	5	3535	35	90	95	320	3,0	89	3,0	170	23,5	PHP 6SPA355TB
400	405,5	5	3535	35	90	95	365	3,0	89	3,0	170	26,0	PHP 6SPA400TB
450	455,5	5	3535	35	90	95	415	3,0	89	3,0	170	30,0	PHP 6SPA450TB
500	505,5	5	3535	35	90	95	465	3,0	89	3,0	170	34,0	PHP 6SPA500TB
560	565,5	5	3535	35	90	95	525	3,0	89	3,0	170	39,0	PHP 6SPA560TB
630	635,5	4	4030	40	100	95	595	3,5	102	3,5	216	53,5	PHP 6SPA630TB
800	805,5	4	4030	40	100	95	765	3,5	102	3,5	216	70,0	PHP 6SPA800TB
1000	1005,5	4	4545	55	120	95	965	9,5	114	9,5	225	85,5	PHP 6SPA1000TB

Dimensions in mm unless otherwise stated  
 \* Weights do not include bushings  
 Non-functional dimensions may vary slightly

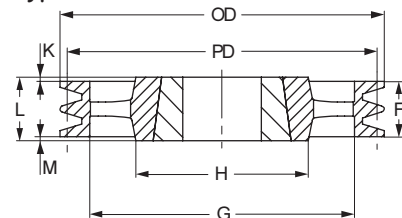
Type 2



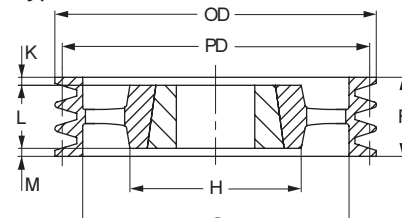
Type 3



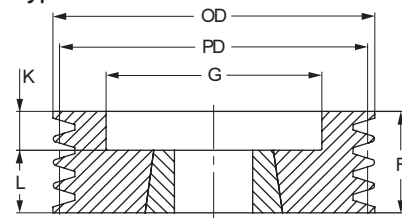
Type 4



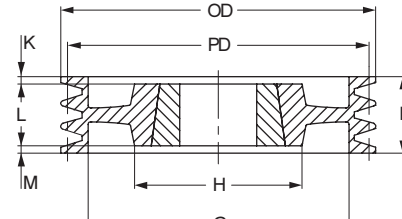
Type 5



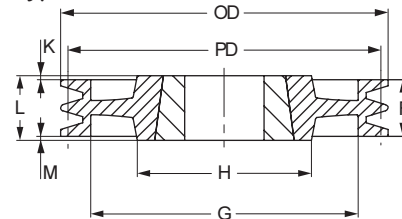
Type 6



Type 7



Type 8





# Wedge belt pulleys

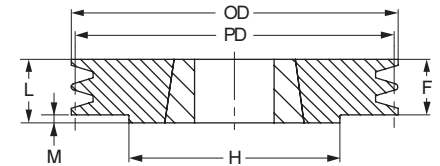
SPB taper bushed



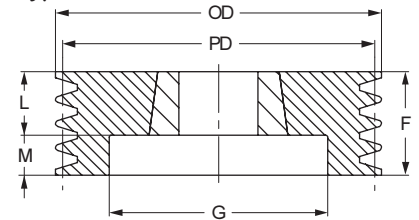
## 1 Groove SPB

Pitch Diameter	OD	Pulley Type	Bush No.	Bore		F	G	K	L	M	H	Weight*	Designation
				Min	Max								
mm	mm			mm	mm	mm	mm	mm	mm	mm	mm	kg	
100	107	1	1610	14	42	25	-	-	25	-	-	0,8	PHP 1SPB100TB
106	113	1	1610	14	42	25	-	-	25	-	-	1,0	PHP 1SPB106TB
112	119	1	1610	14	42	25	-	-	25	-	-	1,2	PHP 1SPB112TB
118	125	1	1610	14	42	25	-	-	25	-	-	1,5	PHP 1SPB118TB
125	132	1	1610	14	42	25	-	-	25	-	-	1,5	PHP 1SPB125TB
132	139	1	1610	14	42	25	-	-	25	-	-	1,8	PHP 1SPB132TB
140	147	1	1610	14	42	25	-	-	25	-	-	2,1	PHP 1SPB140TB
150	157	1	1610	14	42	25	-	-	25	-	-	2,5	PHP 1SPB150TB
160	167	1	1610	14	42	25	-	-	25	-	-	2,9	PHP 1SPB160TB
170	177	1	1610	14	42	25	-	-	25	-	-	3,0	PHP 1SPB170TB
180	187	7	1610	14	42	25	137	-	25	-	80	3,8	PHP 1SPB180TB
190	197	8	2012	14	50	25	147	3,5	32	3,5	100	4,4	PHP 1SPB190TB
200	207	8	2012	14	50	25	157	3,5	32	3,5	100	4,0	PHP 1SPB200TB
212	219	8	2012	14	50	25	169	3,5	32	3,5	100	5,2	PHP 1SPB212TB
224	231	8	2012	14	50	25	181	3,5	32	3,5	100	5,2	PHP 1SPB224TB
236	243	8	2012	14	50	25	193	3,5	32	3,5	100	5,4	PHP 1SPB236TB
250	257	8	2012	14	50	25	207	3,5	32	3,5	100	6,2	PHP 1SPB250TB
280	287	8	2012	14	50	25	237	3,5	32	3,5	100	6,5	PHP 1SPB280TB
300	307	8	2012	14	50	25	258	3,5	32	3,5	100	7,0	PHP 1SPB300TB
315	322	8	2012	14	50	25	272	3,5	32	3,5	100	7,5	PHP 1SPB315TB
335	342	8	2517	16	60	25	288	10,0	45	10,0	125	8,5	PHP 1SPB335TB
355	362	8	3020	25	75	25	312	13,0	51	13,0	146	9,5	PHP 1SPB355TB
400	407	8	3020	25	75	25	357	13,0	51	13,0	146	11,0	PHP 1SPB400TB
450	457	4	3020	25	75	25	407	13,0	51	13,0	146	12,3	PHP 1SPB450TB
500	507	4	3020	25	75	25	457	13,0	51	13,0	146	14,6	PHP 1SPB500TB
560	567	4	3020	25	75	25	517	13,0	51	13,0	146	18,5	PHP 1SPB560TB
630	637	4	3020	25	75	25	587	13,0	51	13,0	146	20,5	PHP 1SPB630TB

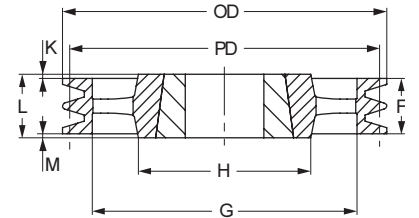
Type 1



Type 2



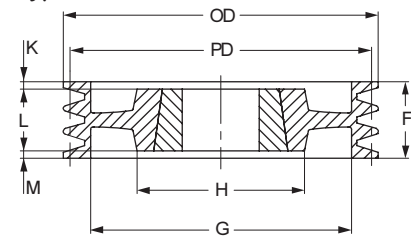
Type 4



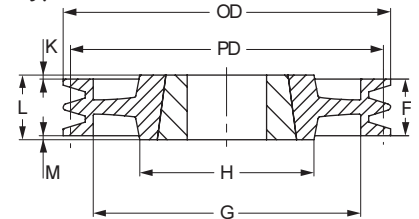
## 2 Groove SPB

Pitch Diameter	OD	Pulley Type	Bush No.	Bore		F	G	K	L	M	H	Weight*	Designation
				Min	Max								
mm	mm			mm	mm	mm	mm	mm	mm	mm	mm	kg	
100	107	2	1610	14	42	44	62	-	25	19,0	-	1,3	PHP 2SPB100TB
106	113	2	1610	14	42	44	67	-	25	19,0	-	1,5	PHP 2SPB106TB
112	119	2	1610	14	42	44	72	-	25	19,0	-	1,5	PHP 2SPB112TB
118	125	2	1610	14	42	44	78	-	25	19,0	-	1,7	PHP 2SPB118TB
125	132	2	2012	14	50	44	82	-	32	12,0	-	2,0	PHP 2SPB125TB
132	139	2	2012	14	50	44	89	-	32	12,0	-	2,4	PHP 2SPB132TB
140	147	2	2012	14	50	44	97	-	32	12,0	-	2,8	PHP 2SPB140TB
150	157	2	2012	14	50	44	107	-	32	12,0	-	3,3	PHP 2SPB150TB
160	167	2	2012	14	50	44	117	-	32	12,0	-	4,0	PHP 2SPB160TB
170	177	2	2012	14	50	44	127	-	32	12,0	-	4,4	PHP 2SPB170TB
180	187	1	2517	16	60	44	-	-	45	1,0	120	5,5	PHP 2SPB180TB
190	197	1	2517	16	60	44	-	-	45	1,0	120	6,5	PHP 2SPB190TB
200	207	1	2517	16	60	44	-	-	45	1,0	120	7,5	PHP 2SPB200TB
212	219	8	2517	16	60	44	169	-	45	1,0	120	7,0	PHP 2SPB212TB
224	231	8	2517	16	60	44	181	-	45	1,0	120	7,7	PHP 2SPB224TB
236	243	8	2517	16	60	44	193	-	45	1,0	120	8,3	PHP 2SPB236TB
250	257	8	2517	16	60	44	207	-	45	1,0	120	8,6	PHP 2SPB250TB
280	287	8	2517	16	60	44	237	-	45	1,0	120	10,1	PHP 2SPB280TB
300	307	8	2517	16	60	44	257	-	45	1,0	120	11,0	PHP 2SPB300TB
315	322	8	2517	16	60	44	272	-	45	1,0	120	12,2	PHP 2SPB315TB
335	342	8	2517	16	60	44	292	-	45	1,0	120	14,0	PHP 2SPB335TB
355	362	4	3020	25	75	44	312	3,5	51	3,5	120	15,9	PHP 2SPB355TB
400	407	4	3020	25	75	44	357	3,5	51	3,5	150	18,3	PHP 2SPB400TB
450	457	4	3020	25	75	44	407	3,5	51	3,5	150	16,3	PHP 2SPB450TB
500	507	4	3020	25	75	44	457	3,5	51	3,5	150	18,6	PHP 2SPB500TB
560	567	4	3020	25	75	44	517	4,0	76	28,0	150	22,5	PHP 2SPB560TB
630	637	4	3020	25	75	44	587	4,0	76	16,0	150	25,5	PHP 2SPB630TB

Type 7



Type 8



Dimensions in mm unless otherwise stated

\* Weights do not include bushings

Non-functional dimensions may vary slightly



# Wedge belt pulleys

SPB taper bushed

- ▶ . . . . . Belts
- ▶ . . . . . Chains
- ▶ . . . . . Couplings
- ▶ . . . . . Bushings and Hubs
- ▶ . . . . . Sprockets
- ▶ . . . . . Pulleys
- ▶ . . . . . Smart tools

## 3 Groove SPB

Pitch Diameter	OD	Pulley Type	Bush No.	Bore		F	G	K	L	M	H	Weight*	Designation
				Min	Max								
mm	mm			mm	mm	mm	mm	mm	mm	mm	mm	kg	
100	107	6	1610	14	42	63	57	-	25	38	-	0,9	PHP 3SPB100TB
106	113	6	1610	14	42	63	67	-	25	38	-	2,0	PHP 3SPB106TB
112	119	6	1610	14	42	63	72	-	25	38	-	2,0	PHP 3SPB112TB
118	125	2	1610	14	42	63	78	-	25	38	-	2,3	PHP 3SPB118TB
125	132	2	2012	14	50	63	82	-	32	31	-	2,5	PHP 3SPB125TB
132	139	2	2012	14	50	63	89	-	32	31	-	3,1	PHP 3SPB132TB
140	147	2	2012	14	50	63	97	-	32	31	-	3,5	PHP 3SPB140TB
150	157	2	2517	16	60	63	107	-	45	18	-	4,0	PHP 3SPB150TB
160	167	2	2517	16	60	63	117	-	45	18	-	4,9	PHP 3SPB160TB
170	177	2	2517	16	60	63	127	-	45	18	-	5,7	PHP 3SPB170TB
180	187	2	2517	16	60	63	137	-	45	18	-	6,7	PHP 3SPB180TB
190	197	2	2517	16	60	63	147	-	45	18	-	7,6	PHP 3SPB190TB
200	207	2	2517	16	60	63	157	-	45	18	-	8,9	PHP 3SPB200TB
212	219	7	2517	16	60	63	169	-	45	18	120	8,2	PHP 3SPB212TB
224	231	7	2517	16	60	63	181	-	45	18	120	9,1	PHP 3SPB224TB
236	243	7	2517	16	60	63	193	-	45	18	120	9,8	PHP 3SPB236TB
250	257	7	3020	25	75	63	207	-	51	12	150	11,2	PHP 3SPB250TB
280	287	7	3020	25	75	63	237	6	51	6	150	12,0	PHP 3SPB280TB
300	307	7	3020	25	75	63	257	6	51	6	150	13,5	PHP 3SPB300TB
315	322	7	3020	25	75	63	272	6	51	6	150	14,2	PHP 3SPB315TB
335	342	7	3020	25	75	63	292	6	51	6	150	16,0	PHP 3SPB335TB
355	362	5	3020	25	75	63	312	6	51	6	150	17,7	PHP 3SPB355TB
400	407	4	3535	35	90	63	357	13	89	13	170	25,0	PHP 3SPB400TB
450	457	4	3535	35	90	63	407	-	89	26	170	26,3	PHP 3SPB450TB
500	507	4	3535	35	90	63	457	-	89	26	170	29,9	PHP 3SPB500TB
560	567	4	3535	35	90	63	517	-	89	26	170	37,2	PHP 3SPB560TB
630	637	4	3535	35	90	63	587	-	89	26	170	41,0	PHP 3SPB630TB
710	717	4	3535	35	90	63	664	4	89	22	170	48,0	PHP 3SPB710TB
800	807	4	3535	35	90	63	754	4	89	22	170	55,0	PHP 3SPB800TB
900	907	4	3535	35	90	63	854	4	89	22	170	64,1	PHP 3SPB900TB
1000	1007	4	4040	40	100	63	954	6	102	33	200	72,0	PHP 3SPB1000TB
1250	1257	4	4040	40	100	63	1204	6	102	33	200	140,0	PHP 3SPB1250TB

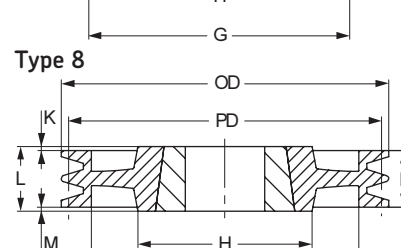
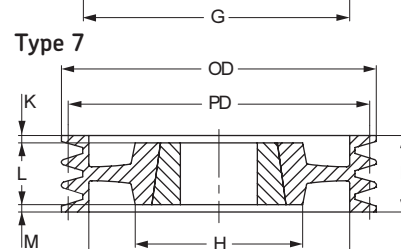
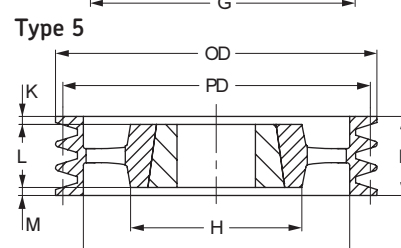
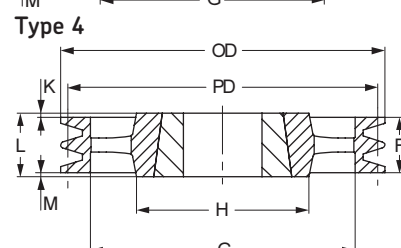
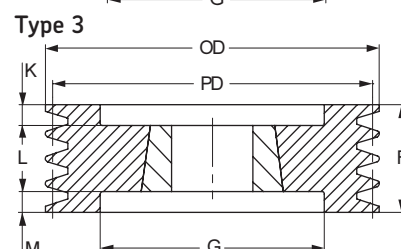
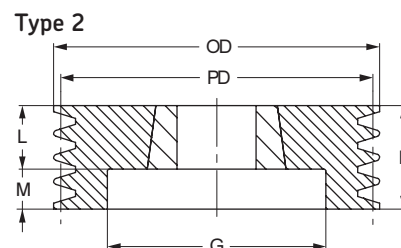
## 4 Groove SPB

Pitch Diameter	OD	Pulley Type	Bush No.	Bore		F	G	K	L	M	H	Weight*	Designation
				Min	Max								
mm	mm			mm	mm	mm	mm	mm	mm	mm	mm	kg	
100	107	3	1210	11	32	82	58	29,0	25	29,0	-	2,4	PHP 4SPB100TB
106	113	3	1610	14	42	82	65	29,0	25	29,0	-	2,3	PHP 4SPB106TB
112	119	3	1610	14	42	82	65	29,0	25	29,0	-	2,8	PHP 4SPB112TB
118	125	3	1610	14	42	82	71	29,0	25	29,0	-	3,3	PHP 4SPB118TB
125	132	3	2012	14	50	82	82	25,0	32	25,0	-	3,0	PHP 4SPB125TB
132	139	3	2012	14	50	82	89	25,0	32	25,0	-	3,8	PHP 4SPB132TB
140	147	3	2517	16	60	82	97	18,5	45	18,5	-	4,0	PHP 4SPB140TB
150	157	3	2517	16	60	82	107	18,5	45	18,5	-	4,9	PHP 4SPB150TB
160	167	3	2517	16	60	82	117	18,5	45	18,5	-	5,8	PHP 4SPB160TB
170	177	3	2517	16	60	82	127	18,5	45	18,5	-	6,6	PHP 4SPB170TB
180	187	3	2517	16	60	82	137	18,5	45	18,5	-	7,7	PHP 4SPB180TB
190	197	3	2517	16	60	82	147	18,5	45	18,5	-	8,6	PHP 4SPB190TB
200	207	3	3020	25	75	82	157	15,5	51	15,5	-	9,3	PHP 4SPB200TB
212	219	3	3020	25	75	82	169	15,5	51	15,5	-	10,9	PHP 4SPB212TB
224	231	3	3020	25	75	82	181	15,5	51	15,5	-	12,4	PHP 4SPB224TB
236	243	3	3020	25	75	82	193	15,5	51	15,5	-	14,1	PHP 4SPB236TB
250	257	7	3020	25	75	82	207	15,5	51	15,5	150	12,7	PHP 4SPB250TB
280	287	7	3020	25	75	82	237	15,5	51	15,5	150	13,8	PHP 4SPB280TB
300	307	7	3535	35	90	82	257	15,5	89	7,0	150	20,5	PHP 4SPB300TB
315	322	8	3535	35	90	82	272	3,5	89	3,5	170	20,6	PHP 4SPB315TB
335	342	8	3535	35	90	82	292	3,5	89	3,5	170	22,0	PHP 4SPB335TB
355	362	8	3535	35	90	82	312	3,5	89	3,5	170	23,2	PHP 4SPB355TB
400	407	4	3535	35	90	82	357	3,5	89	3,5	170	26,5	PHP 4SPB400TB
450	457	4	3535	35	90	82	407	-	89	7,0	170	29,7	PHP 4SPB450TB
500	507	4	3535	35	90	82	457	-	89	7,0	170	34,7	PHP 4SPB500TB
560	567	4	3535	35	90	82	517	-	89	7,0	170	39,0	PHP 4SPB560TB
630	637	4	3535	35	90	82	587	-	89	7,0	170	44,5	PHP 4SPB630TB
710	717	4	3535	35	90	82	664	3,5	89	3,5	187	50,5	PHP 4SPB710TB
800	807	4	4040	40	100	82	754	10,0	102	10,0	200	60,5	PHP 4SPB800TB
900	907	4	4040	40	100	82	854	10,0	102	10,0	216	70,0	PHP 4SPB900TB
1000	1007	4	4040	40	100	82	954	10,0	102	10,0	216	76,5	PHP 4SPB1000TB
1250	1257	4	4545	55	110	82	1204	16,0	114	16,0	225	162,0	PHP 4SPB1250TB

Dimensions in mm unless otherwise stated

\* Weights do not include bushings

Non-functional dimensions may vary slightly





# Wedge belt pulleys

SPB taper bushed



## 5 Groove SPB

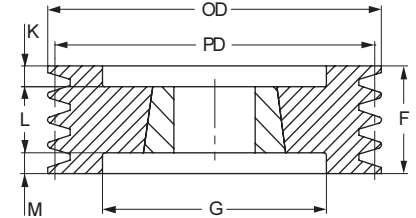
Pitch Diameter	OD	Pulley Type	Bush No.	Bore		F	G	K	L	M	H	Weight*	Designation
				Min	Max								
mm	mm			mm	mm	mm	mm	mm	mm	mm	mm	kg	
125	132	6	2012	14	50	101	87	69,0	32	-	-	3,6	PHP 5SPB125TB
132	139	6	2517	16	60	101	94	56,0	45	-	-	3,8	PHP 5SPB132TB
140	147	3	2517	16	60	101	97	28,0	45	28,0	-	4,2	PHP 5SPB140TB
150	157	3	2517	16	60	101	107	28,0	45	28,0	-	5,7	PHP 5SPB150TB
160	167	3	2517	16	60	101	117	28,0	45	28,0	-	6,7	PHP 5SPB160TB
170	177	3	3020	25	75	101	127	25,0	51	25,0	-	6,7	PHP 5SPB170TB
180	187	3	3020	25	75	101	137	25,0	51	25,0	-	7,8	PHP 5SPB180TB
190	197	3	3020	25	75	101	147	25,0	51	25,0	-	9,1	PHP 5SPB190TB
200	207	3	3020	25	75	101	157	25,0	51	25,0	-	10,3	PHP 5SPB200TB
212	219	3	3020	25	75	101	169	25,0	51	25,0	-	12,2	PHP 5SPB212TB
224	231	3	3020	25	75	101	181	25,0	51	25,0	-	13,7	PHP 5SPB224TB
236	243	3	3535	35	90	101	193	6,0	89	6,0	-	15,9	PHP 5SPB236TB
250	257	3	3535	35	90	101	207	6,0	89	6,0	-	18,6	PHP 5SPB250TB
280	287	7	3535	35	90	101	237	6,0	89	6,0	170	21,4	PHP 5SPB280TB
300	307	7	3535	35	90	101	257	6,0	89	6,0	170	22,5	PHP 5SPB300TB
315	322	7	3535	35	90	101	272	6,0	89	6,0	170	22,3	PHP 5SPB315TB
335	342	7	3535	35	90	101	292	6,0	89	6,0	170	24,0	PHP 5SPB335TB
355	362	7	3535	35	90	101	312	6,0	89	6,0	170	25,5	PHP 5SPB355TB
400	407	5	3535	35	90	101	357	6,0	89	6,0	170	30,2	PHP 5SPB400TB
450	457	5	3535	35	90	101	407	-	89	12,0	170	32,8	PHP 5SPB450TB
500	507	5	3535	35	90	101	457	-	89	12,0	170	36,7	PHP 5SPB500TB
560	567	4	4040	40	100	101	517	-	102	1,0	200	45,6	PHP 5SPB560TB
630	637	4	4040	40	100	101	587	-	102	1,0	200	50,0	PHP 5SPB630TB
710	717	4	4040	40	100	101	664	0,5	102	0,5	200	63,5	PHP 5SPB710TB
800	807	4	4040	40	100	101	754	0,5	102	0,5	200	67,0	PHP 5SPB800TB
900	907	4	4040	40	100	101	854	6,5	114	6,5	200	103,0	PHP 5SPB900TB
1000	1007	4	4545	55	110	101	954	6,5	114	6,5	225	110,0	PHP 5SPB1000TB
1250	1257	4	4545	55	110	101	1204	6,5	114	6,5	225	180,0	PHP 5SPB1250TB

## 6 Groove SPB

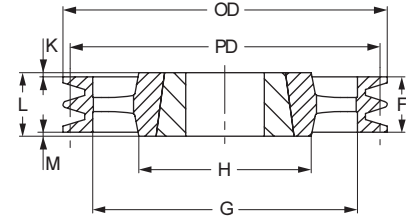
Pitch Diameter	OD	Pulley Type	Bush No.	Bore		F	G	K	L	M	H	Weight*	Designation
				Min	Max								
mm	mm			mm	mm	mm	mm	mm	mm	mm	mm	kg	
125	132	3	2012	14	50	120	85	44,0	32	44,0	-	4,2	PHP 6SPB125TB
132	139	3	2012	14	50	120	92	44,0	32	44,0	-	4,5	PHP 6SPB132TB
140	147	3	2517	16	60	120	97	37,5	45	37,5	-	4,7	PHP 6SPB140TB
150	157	3	2517	16	60	120	107	37,5	45	37,5	-	6,5	PHP 6SPB150TB
160	167	3	3020	25	75	120	117	34,5	51	34,5	-	5,9	PHP 6SPB160TB
170	177	3	3020	25	75	120	127	34,5	51	34,5	-	7,6	PHP 6SPB170TB
180	187	3	3020	25	75	120	137	34,5	51	34,5	-	8,9	PHP 6SPB180TB
190	197	3	3020	25	75	120	147	34,5	51	34,5	-	10,2	PHP 6SPB190TB
200	207	3	3020	25	75	120	157	34,5	51	34,5	-	11,7	PHP 6SPB200TB
212	219	3	3535	35	90	120	169	15,5	89	15,5	-	13,2	PHP 6SPB212TB
224	231	3	3535	35	90	120	181	15,5	89	15,5	-	15,2	PHP 6SPB224TB
236	243	3	3535	35	90	120	193	15,5	89	15,5	-	17,6	PHP 6SPB236TB
250	257	3	3535	35	90	120	207	15,5	89	15,5	-	20,2	PHP 6SPB250TB
280	287	7	3535	35	90	120	237	15,5	89	15,5	191	23,5	PHP 6SPB280TB
300	307	7	3535	35	90	120	257	15,5	89	15,5	191	24,0	PHP 6SPB300TB
315	322	7	3535	35	90	120	272	15,5	89	15,5	191	24,1	PHP 6SPB315TB
335	342	7	3535	35	90	120	292	15,5	89	15,5	191	26,0	PHP 6SPB335TB
355	362	7	3535	35	90	120	312	15,5	89	15,5	191	28,3	PHP 6SPB355TB
400	407	5	3535	35	90	120	357	15,5	89	15,5	191	31,8	PHP 6SPB400TB
450	457	5	4040	40	100	120	407	-	102	18,0	191	35,3	PHP 6SPB450TB
500	507	5	4040	40	100	120	457	-	102	18,0	191	40,7	PHP 6SPB500TB
560	567	5	4040	40	100	120	517	-	102	18,0	191	49,2	PHP 6SPB560TB
630	637	5	4040	40	100	120	587	-	102	18,0	191	53,5	PHP 6SPB630TB
710	717	5	4040	40	100	120	664	9,0	102	9,0	240	69,0	PHP 6SPB710TB
800	807	5	4545	55	110	120	754	3,0	114	3,0	240	84,5	PHP 6SPB800TB
900	907	5	4545	55	110	120	854	3,0	114	3,0	240	94,5	PHP 6SPB900TB
1000	1007	5	4545	55	110	120	954	3,0	114	3,0	240	104,0	PHP 6SPB1000TB
1250	1257	4	4545	55	110	120	1204	3,5	127	3,5	265	210,0	PHP 6SPB1250TB

Dimensions in mm unless otherwise stated  
 \* Weights do not include bushings  
 Non-functional dimensions may vary slightly

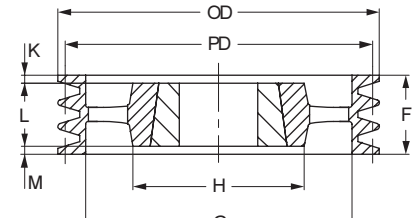
Type 3



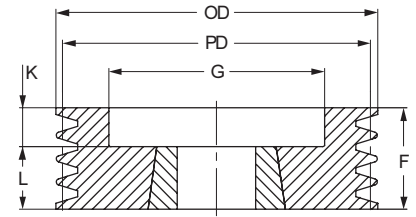
Type 4



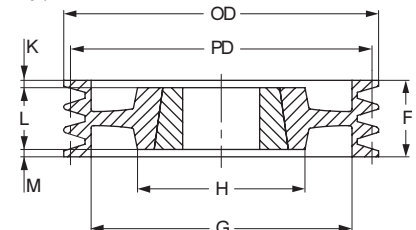
Type 5



Type 6



Type 7





# Wedge belt pulleys

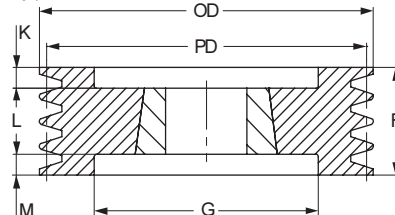
SPB taper bushed

- ▶ ..... Belts
- ▶ ..... Chains
- ▶ ..... Couplings
- ▶ ..... Bushings and Hubs
- ▶ ..... Sprockets
- ▶ ..... Pulleys
- ▶ ..... Smart tools

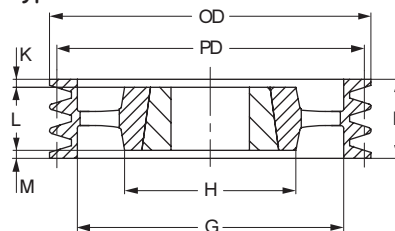
## 8 Groove SPB

Pitch Diameter	OD	Pulley Type	Bush No.	Bore		F	G	K	L	M	H	Weight*	Designation
				Min	Max								
140	147	3	2517	16	60	158	97	56,5	45	56,5	-	6,8	PHP 8SPB140TB
160	167	3	3020	25	75	158	117	53,5	51	53,5	-	8,3	PHP 8SPB160TB
170	177	3	3030	35	75	158	127	41,0	76	41,0	-	9,5	PHP 8SPB170TB
180	187	3	3030	35	75	158	137	41,0	76	41,0	-	10,8	PHP 8SPB180TB
190	197	3	3030	35	75	158	147	41,0	76	41,0	-	12,3	PHP 8SPB190TB
200	207	3	3535	35	90	158	157	34,5	89	34,5	-	13,7	PHP 8SPB200TB
212	219	3	3535	35	90	158	169	34,5	89	34,5	-	15,8	PHP 8SPB212TB
224	231	3	3535	35	90	158	181	34,5	89	34,5	-	17,9	PHP 8SPB224TB
236	243	3	3535	35	90	158	193	34,5	89	34,5	-	20,0	PHP 8SPB236TB
250	257	3	3535	35	90	158	207	34,5	89	34,5	-	23,2	PHP 8SPB250TB
280	287	3	3535	35	90	158	237	34,5	89	34,5	-	26,6	PHP 8SPB280TB
300	307	6	3535	35	90	158	257	34,5	89	34,5	170	27,3	PHP 8SPB300TB
315	322	6	3535	35	90	158	272	34,5	89	34,5	170	28,0	PHP 8SPB315TB
335	342	6	3535	35	90	158	292	34,5	89	34,5	170	30,5	PHP 8SPB335TB
355	362	6	3535	35	90	158	312	34,5	89	34,5	170	31,5	PHP 8SPB355TB
400	407	5	4040	40	100	158	357	28,0	102	28,0	200	43,0	PHP 8SPB400TB
450	457	5	4040	40	100	158	407	28,0	102	28,0	200	46,0	PHP 8SPB450TB
500	507	5	4040	40	100	158	457	28,0	102	28,0	200	52,0	PHP 8SPB500TB
560	567	5	4545	55	110	158	517	22,0	114	22,0	225	54,5	PHP 8SPB560TB
630	637	5	4545	55	110	158	587	22,0	114	22,0	225	67,0	PHP 8SPB630TB
710	717	5	4545	55	110	158	664	22,0	114	22,0	225	75,5	PHP 8SPB710TB
800	807	5	4545	55	110	158	754	22,0	114	22,0	225	94,5	PHP 8SPB800TB
900	907	5	4545	55	110	158	854	22,0	114	22,0	225	113,5	PHP 8SPB900TB
1000	1007	5	5050	70	125	158	954	15,5	127	15,5	245	121,5	PHP 8SPB1000TB
1250	1257	5	5050	70	125	158	1204	15,5	127	15,5	245	242,0	PHP 8SPB1250TB

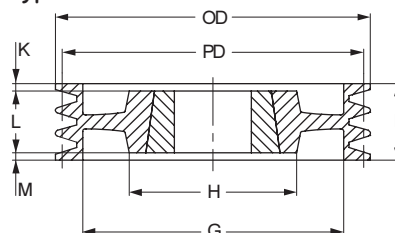
Type 3



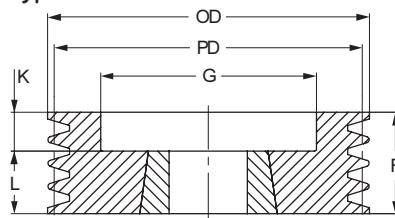
Type 5



Type 7



Type 6



## 10 Groove SPB

Pitch Diameter	OD	Pulley Type	Bush No.	Bore		F	G	K	L	M	H	Weight*	Designation
				Min	Max								
224	231	3	3535	35	90	196	181	53,5	89	53,5	-	20,5	PHP 10SPB224TB
236	243	3	3535	35	90	196	193	53,5	89	53,5	-	22,6	PHP 10SPB236TB
250	257	3	3535	35	90	196	207	53,5	89	53,5	-	26,6	PHP 10SPB250TB
280	287	3	3535	35	90	196	237	53,5	89	53,5	-	27,8	PHP 10SPB280TB
315	322	7	3535	35	90	196	272	53,5	89	53,5	170	28,8	PHP 10SPB315TB
335	342	7	4040	40	100	196	292	47,0	102	47,0	200	32,0	PHP 10SPB335TB
355	362	7	4040	40	100	196	312	47,0	102	47,0	200	33,5	PHP 10SPB355TB
400	407	5	4040	40	100	196	357	47,0	102	47,0	200	36,0	PHP 10SPB400TB
450	457	5	4545	55	110	196	407	41,0	114	41,0	225	47,0	PHP 10SPB450TB
500	507	5	4545	55	110	196	457	41,0	114	41,0	225	55,0	PHP 10SPB500TB
560	567	5	4545	55	110	196	517	41,0	114	41,0	225	59,0	PHP 10SPB560TB
630	637	5	4545	55	110	196	587	41,0	114	41,0	225	66,0	PHP 10SPB630TB
710	717	5	4545	55	125	196	664	41,0	114	41,0	225	75,0	PHP 10SPB710TB
800	807	5	4545	55	125	196	754	41,0	114	41,0	225	96,0	PHP 10SPB800TB
900	907	5	5050	70	125	196	854	34,5	127	34,5	245	119,0	PHP 10SPB900TB
1000	1007	5	5050	70	125	196	954	34,5	127	34,5	245	141,0	PHP 10SPB1000TB
1250	1257	5	5050	70	125	196	1203	35,0	127	-	-	265,0	PHP 10SPB1250TB

Dimensions in mm unless otherwise stated

\* Weights do not include bushings

Non-functional dimensions may vary slightly



# Wedge belt pulleys

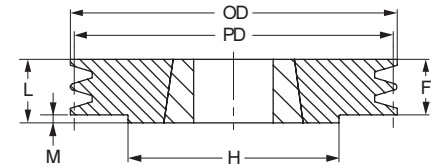
SPC taper bushed



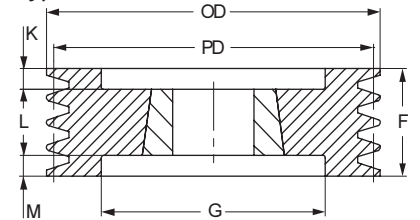
## 3 Groove SPC

Pitch Diameter	OD	Pulley Type	Bush No.	Bore		F	G	K	L	M	H	Weight*	Designation
				Min	Max								
mm	mm			mm	mm	mm	mm	mm	mm	mm	mm	kg	
200	209,6	3	2517	16	60	85	150	20,0	45	20,0	-	10,2	PHP 3SPC200TB
212	221,6	3	3020	25	75	85	162	17,0	51	17,0	-	11,2	PHP 3SPC212TB
224	233,6	3	3020	25	75	85	173	17,0	51	17,0	-	12,7	PHP 3SPC224TB
236	245,6	3	3020	25	75	85	185	17,0	51	17,0	-	14,4	PHP 3SPC236TB
250	259,6	3	3020	25	75	85	100	17,0	51	17,0	-	16,5	PHP 3SPC250TB
265	274,6	1	3535	35	90	85	209	-	89	4,0	170	19,7	PHP 3SPC265TB
280	289,6	1	3535	35	90	85	224	-	89	4,0	170	22,7	PHP 3SPC280TB
300	309,6	7	3535	35	90	85	249	2,0	89	2,0	170	22,7	PHP 3SPC300TB
315	324,6	7	3535	35	90	85	264	2,0	89	2,0	170	22,0	PHP 3SPC315TB
335	344,6	7	3535	35	90	85	284	2,0	89	2,0	170	24,1	PHP 3SPC335TB
355	364,6	7	3535	35	90	85	304	2,0	89	2,0	170	26,2	PHP 3SPC355TB
375	384,6	7	3535	35	90	85	324	2,0	89	2,0	170	28,0	PHP 3SPC375TB
400	409,6	4	3535	35	90	85	344	2,0	89	2,0	170	29,3	PHP 3SPC400TB
425	434,6	4	3535	35	90	85	369	2,0	89	2,0	170	32,8	PHP 3SPC425TB
450	459,6	4	3535	35	90	85	394	2,0	89	2,0	170	34,7	PHP 3SPC450TB
475	484,6	4	3535	35	90	85	419	2,0	89	2,0	170	36,5	PHP 3SPC475TB
500	509,6	4	3535	35	90	85	444	2,0	89	2,0	170	40,0	PHP 3SPC500TB
530	539,6	4	3535	35	90	85	474	2,0	89	2,0	170	42,5	PHP 3SPC530TB
560	569,6	4	3535	35	90	85	504	2,0	89	2,0	170	45,9	PHP 3SPC560TB
630	639,6	4	4040	40	100	85	574	8,5	102	8,5	200	76,3	PHP 3SPC630TB
710	719,6	4	4040	40	100	85	654	8,5	102	8,5	200	81,6	PHP 3SPC710TB
800	809,6	4	4545	55	110	85	737	14,5	114	14,5	225	87,0	PHP 3SPC800TB
1000	1009,6	4	5050	70	125	85	937	21,0	127	21,0	245	120,0	PHP 3SPC1000TB
1250	1259,6	4	5050	70	125	85	1187	21,0	127	21,0	245	175,0	PHP 3SPC1250TB

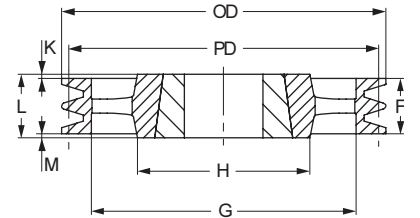
Type 1



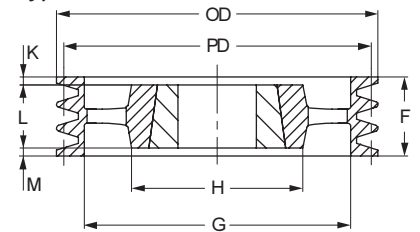
Type 3



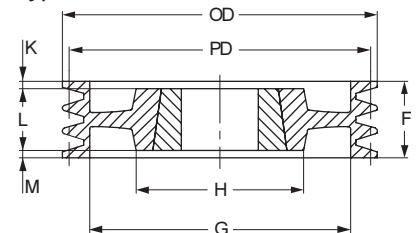
Type 4



Type 5



Type 7



## 4 Groove SPC

Pitch Diameter	OD	Pulley Type	Bush No.	Bore		F	G	K	L	M	H	Weight*	Designation
				Min	Max								
mm	mm			mm	mm	mm	mm	mm	mm	mm	mm	kg	
200	209,6	3	3020	25	75	111	144	30,0	51	30,0	-	11,3	PHP 4SPC200TB
212	221,6	3	3020	25	75	111	156	30,0	51	30,0	-	13,0	PHP 4SPC212TB
224	233,6	3	3535	35	90	111	168	11,0	89	11,0	-	14,5	PHP 4SPC224TB
236	245,6	3	3535	35	90	111	180	11,0	89	11,0	-	16,7	PHP 4SPC236TB
250	259,6	3	3535	35	90	111	194	11,0	89	11,0	-	19,3	PHP 4SPC250TB
265	274,6	3	3535	35	90	111	209	11,0	89	11,0	-	22,4	PHP 4SPC265TB
280	289,6	3	3535	35	90	111	224	11,0	89	11,0	-	25,4	PHP 4SPC280TB
300	309,6	7	3535	35	90	111	244	11,0	89	11,0	170	25,4	PHP 4SPC300TB
315	324,6	7	3535	35	90	111	259	11,0	89	11,0	170	25,3	PHP 4SPC315TB
335	344,6	7	3535	35	90	111	279	11,0	89	11,0	170	27,4	PHP 4SPC335TB
355	364,6	7	3535	35	90	111	299	11,0	89	11,0	170	29,6	PHP 4SPC355TB
375	384,6	7	3535	35	90	111	319	11,0	89	11,0	170	31,3	PHP 4SPC375TB
400	409,6	5	3535	35	90	111	344	11,0	89	11,0	170	33,8	PHP 4SPC400TB
425	434,6	5	3535	35	90	111	369	11,0	89	11,0	170	38,0	PHP 4SPC425TB
450	459,6	5	3535	35	90	111	394	11,0	89	11,0	170	41,3	PHP 4SPC450TB
475	484,6	5	3535	35	90	111	419	11,0	89	11,0	170	43,7	PHP 4SPC475TB
500	509,6	5	3535	35	90	111	444	11,0	89	11,0	170	46,0	PHP 4SPC500TB
530	539,6	5	4040	40	100	111	474	4,5	102	4,5	170	52,0	PHP 4SPC530TB
560	569,6	5	4040	40	100	111	504	4,5	102	4,5	200	58,0	PHP 4SPC560TB
630	639,6	4	4545	55	110	111	574	1,5	114	1,5	225	63,8	PHP 4SPC630TB
710	719,6	4	5050	70	125	111	654	4,0	127	12,0	245	83,2	PHP 4SPC710TB
800	809,6	4	5050	70	125	111	737	4,0	127	12,0	245	102,5	PHP 4SPC800TB
1000	1009,6	4	5050	70	125	111	937	4,0	127	12,0	245	130,0	PHP 4SPC1000TB
1250	1259,6	4	5050	70	125	111	1187	4,0	127	12,0	245	186,0	PHP 4SPC1250TB

Dimensions in mm unless otherwise stated

\* Weights do not include bushings

Non-functional dimensions may vary slightly



# Wedge belt pulleys

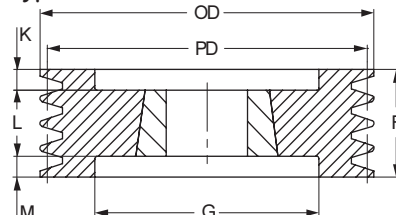
SPC taper bushed

- ▶ ..... Belts
- ▶ ..... Chains
- ▶ ..... Couplings
- ▶ ..... Bushings and Hubs
- ▶ ..... Sprockets
- ▶ ..... Pulleys
- ▶ ..... Smart tools

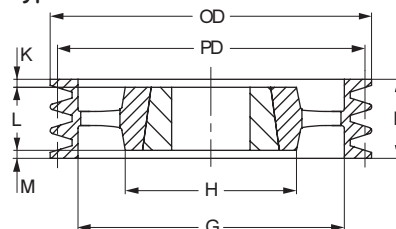
## 5 Groove SPC

Pitch Diameter	OD	Pulley Type	Bush No.	Bore		F	G	K	L	M	H	Weight*	Designation
				Min	Max								
200	209,6	3	3535	35	90	136	150	23,5	89	23,5	-	12,2	PHP 5SPC200TB
212	221,6	3	3535	35	90	136	160	23,5	89	23,5	-	14,5	PHP 5SPC212TB
224	233,6	3	3535	35	90	136	173	23,5	89	23,5	-	16,6	PHP 5SPC224TB
236	245,6	3	3535	35	90	136	185	23,5	89	23,5	-	18,9	PHP 5SPC236TB
250	259,6	3	3535	35	90	136	198	23,5	89	23,5	-	21,5	PHP 5SPC250TB
265	274,6	3	3535	35	90	136	213	23,5	89	23,5	-	25,0	PHP 5SPC265TB
280	289,6	3	3535	35	90	136	228	23,5	89	23,5	-	28,4	PHP 5SPC280TB
300	309,6	7	3535	35	90	136	247	23,5	89	23,5	170	28,2	PHP 5SPC300TB
315	324,6	7	3535	35	90	136	264	23,5	89	23,5	170	28,1	PHP 5SPC315TB
335	344,6	7	3535	35	90	136	280	23,5	89	23,5	170	31,1	PHP 5SPC335TB
355	364,6	7	3535	35	90	136	304	23,5	89	23,5	170	33,1	PHP 5SPC355TB
375	384,6	7	3535	35	90	136	324	23,5	89	23,5	170	35,6	PHP 5SPC375TB
400	409,6	5	3535	35	90	136	344	23,5	89	23,5	170	38,5	PHP 5SPC400TB
425	434,6	5	3535	35	90	136	369	23,5	89	23,5	170	42,5	PHP 5SPC425TB
450	459,6	5	4040	40	100	136	394	17,0	102	17,0	200	44,3	PHP 5SPC450TB
475	484,6	5	4040	40	100	136	419	17,0	102	17,0	200	48,5	PHP 5SPC475TB
500	509,6	5	4040	40	100	136	444	17,0	102	17,0	200	51,0	PHP 5SPC500TB
530	539,6	5	4545	55	110	136	474	17,0	102	17,0	200	66,0	PHP 5SPC530TB
560	569,6	5	4545	55	110	136	504	11,0	114	11,0	200	66,7	PHP 5SPC560TB
630	639,6	5	5050	70	125	136	574	4,5	127	4,5	245	73,0	PHP 5SPC630TB
710	719,6	5	5050	70	125	136	654	4,5	127	4,5	245	93,0	PHP 5SPC710TB
800	809,6	5	5050	70	125	136	737	4,5	127	4,5	245	119,0	PHP 5SPC800TB
1000	1009,6	5	5050	70	125	136	937	4,5	127	4,5	245	147,0	PHP 5SPC1000TB
1250	1259,6	5	5050	70	125	136	1187	4,5	127	4,5	245	210,0	PHP 5SPC1250TB

Type 3



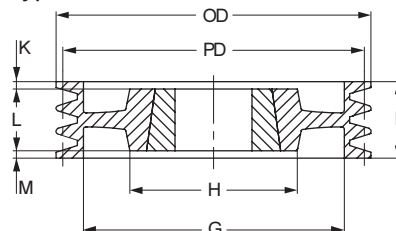
Type 5



## 6 Groove SPC

Pitch Diameter	OD	Pulley Type	Bush No.	Bore		F	G	K	L	M	H	Weight*	Designation
				Min	Max								
200	209,6	3	3535	35	90	162	148	36,5	89	36,5	-	14,1	PHP 6SPC200TB
212	221,6	3	3535	35	90	162	160	36,5	89	36,5	-	16,5	PHP 6SPC212TB
224	233,6	3	3535	35	90	162	173	36,5	89	36,5	-	18,0	PHP 6SPC224TB
236	245,6	3	3535	35	90	162	185	36,5	89	36,5	-	21,3	PHP 6SPC236TB
250	259,6	3	3535	35	90	162	198	36,5	89	36,5	-	29,0	PHP 6SPC250TB
265	274,6	3	3535	35	90	162	213	36,5	89	36,5	-	30,3	PHP 6SPC265TB
280	289,6	7	3535	35	90	162	228	36,5	89	36,5	-	31,5	PHP 6SPC280TB
300	309,6	7	3535	35	90	162	247	36,5	89	36,5	170	31,5	PHP 6SPC300TB
315	324,6	7	3535	35	90	162	264	36,5	89	36,5	170	33,2	PHP 6SPC315TB
335	344,6	7	3535	35	90	162	280	36,5	89	36,5	170	37,5	PHP 6SPC335TB
355	364,6	7	3535	35	90	162	304	36,5	89	36,5	170	40,5	PHP 6SPC355TB
375	384,6	7	4040	40	100	162	324	30,0	102	30,0	200	44,5	PHP 6SPC375TB
400	409,6	7	4040	40	100	162	348	30,0	102	30,0	200	48,0	PHP 6SPC400TB
425	434,6	7	4040	40	100	162	369	30,0	102	30,0	225	51,0	PHP 6SPC425TB
450	459,6	7	4545	55	110	162	394	24,0	114	24,0	225	57,5	PHP 6SPC450TB
475	484,6	7	4545	55	110	162	419	24,0	114	24,0	225	62,0	PHP 6SPC475TB
500	509,6	5	4545	55	110	162	444	24,0	114	24,0	225	67,0	PHP 6SPC500TB
530	539,6	5	5050	70	125	162	474	17,5	114	17,5	245	74,5	PHP 6SPC530TB
560	569,6	5	5050	70	125	162	504	24,0	127	24,0	245	77,5	PHP 6SPC560TB
630	639,6	5	5050	70	125	162	574	17,5	127	17,5	245	88,5	PHP 6SPC630TB
710	719,6	5	5050	70	125	162	654	17,5	127	17,5	245	107,3	PHP 6SPC710TB
800	809,6	5	5050	70	125	162	737	17,5	127	17,5	245	126,0	PHP 6SPC800TB
1000	1009,6	5	5050	70	125	162	937	17,5	127	17,5	245	185,0	PHP 6SPC1000TB
1250	1259,6	5	5050	70	125	162	1187	17,5	127	17,5	245	258,0	PHP 6SPC1250TB

Type 7



Dimensions in mm unless otherwise stated  
 \* Weights do not include bushings  
 Non-functional dimensions may vary slightly



# Wedge belt pulleys

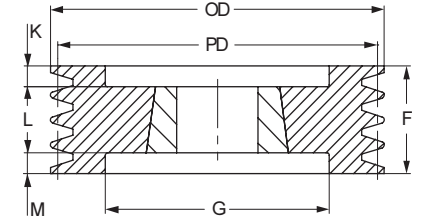
SPC taper bushed



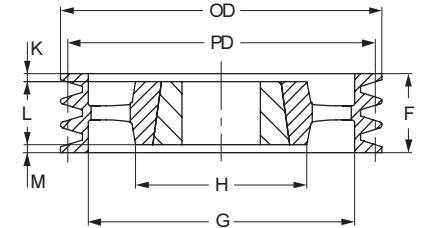
## 8 Groove SPC

Pitch Diameter	OD	Pulley Type	Bush No.	Bore		F	G	K	L	M	H	Weight*	Designation
				Min	Max								
mm	mm			mm	mm	mm	mm	mm	mm	mm	mm	kg	
200	209,6	3	3535	35	90	213	148	62,0	89	62,0	-	20,0	PHP 8SPC200TB
212	221,6	3	3535	35	90	213	160	62,0	89	62,0	-	21,3	PHP 8SPC212TB
224	233,6	3	3535	35	90	213	170	62,0	89	62,0	-	22,9	PHP 8SPC224TB
236	245,6	3	3535	35	90	213	184	62,0	89	62,0	-	25,9	PHP 8SPC236TB
250	259,6	3	3535	35	90	213	198	62,0	89	62,0	-	29,0	PHP 8SPC250TB
265	274,6	3	3535	35	90	213	213	62,0	89	62,0	-	32,5	PHP 8SPC265TB
280	289,6	3	3535	35	90	213	228	62,0	89	62,0	-	36,1	PHP 8SPC280TB
300	309,6	3	4040	40	100	213	207	55,5	102	55,5	-	37,1	PHP 8SPC300TB
315	324,6	3	4040	40	100	213	258	55,5	102	55,5	-	40,0	PHP 8SPC315TB
335	344,6	7	4040	40	100	213	280	55,5	102	55,5	-	44,0	PHP 8SPC335TB
355	364,6	3	4040	40	100	213	304	55,5	102	55,5	-	49,0	PHP 8SPC355TB
375	384,6	3	4545	55	110	213	324	49,5	114	49,5	-	54,5	PHP 8SPC375TB
400	409,6	7	4545	55	110	213	348	49,5	114	49,5	220	58,0	PHP 8SPC400TB
425	434,6	7	4545	55	110	213	369	49,5	114	49,5	245	63,5	PHP 8SPC425TB
450	459,6	7	5050	70	125	213	394	43,0	127	43,0	245	70,0	PHP 8SPC450TB
475	484,6	7	5050	70	125	213	419	43,0	127	43,0	245	72,0	PHP 8SPC475TB
500	509,6	7	5050	70	125	213	444	43,0	127	43,0	245	82,5	PHP 8SPC500TB
530	539,6	7	5050	70	125	213	474	43,0	127	43,0	245	82,5	PHP 8SPC530TB
560	569,6	5	5050	70	125	213	504	43,0	127	43,0	245	94,5	PHP 8SPC560TB
630	639,6	5	5050	70	125	213	574	43,0	127	43,0	245	102,0	PHP 8SPC630TB
710	719,6	5	5050	70	125	213	656	43,0	127	43,0	245	123,5	PHP 8SPC710TB
800	809,6	5	5050	70	125	213	737	43,0	127	43,0	245	145,0	PHP 8SPC800TB
1000	1009,6	5	5050	70	125	213	937	43,0	127	43,0	245	207,0	PHP 8SPC1000TB
1250	1259,6	5	5050	70	125	213	1187	43,0	127	43,0	245	285,0	PHP 8SPC1250TB

Type 3



Type 5



## 10 Groove SPC

Pitch Diameter	OD	Pulley Type	Bush No.	Bore		F	G	K	L	M	H	Weight*	Designation
				Min	Max								
mm	mm			mm	mm	mm	mm	mm	mm	mm	mm	kg	
224	233,6	3	4040	40	100	264	168	81,0	102	-	-	28,0	PHP 10SPC224TB
236	246,0	3	4040	40	100	264	180	81,0	102	81,0	-	30,9	PHP 10SPC236TB
250	259,6	3	4040	40	100	264	196	81,0	102	81,0	-	35,0	PHP 10SPC250TB
265	274,6	3	4040	40	100	264	209	81,0	102	81,0	-	39,5	PHP 10SPC265TB
280	289,6	3	4040	40	100	264	226	81,0	102	81,0	-	42,1	PHP 10SPC280TB
300	309,6	3	4545	55	110	264	245	75,0	114	75,0	-	44,1	PHP 10SPC300TB
315	324,6	3	4545	55	110	264	258	75,0	114	75,0	-	47,0	PHP 10SPC315TB
335	344,6	3	4545	55	110	264	279	75,0	114	75,0	-	51,0	PHP 10SPC335TB
355	364,6	3	4545	55	110	264	299	75,0	114	75,0	-	57,0	PHP 10SPC355TB
375	384,6	3	5050	70	125	264	319	68,5	127	68,5	245	62,5	PHP 10SPC375TB
400	409,6	3	5050	70	125	264	342	68,5	127	68,5	245	66,0	PHP 10SPC400TB
425	434,6	7	5050	70	125	264	369	68,5	127	68,5	245	70,5	PHP 10SPC425TB
450	459,6	7	5050	70	125	264	394	68,5	127	68,5	245	78,0	PHP 10SPC450TB
475	484,6	7	5050	70	125	264	419	68,5	127	68,5	245	82,0	PHP 10SPC475TB
500	509,6	7	5050	70	125	264	444	68,5	127	68,5	245	95,5	PHP 10SPC500TB
530	539,6	7	5050	70	125	264	474	68,5	127	68,5	245	106,0	PHP 10SPC530TB
560	569,6	5	5050	70	125	264	504	68,5	127	68,5	245	94,7	PHP 10SPC560TB
630	639,6	5	5050	70	125	264	574	68,5	127	68,5	245	113,2	PHP 10SPC630TB
710	719,6	5	5050	70	125	264	654	68,5	127	68,5	245	133,5	PHP 10SPC710TB
800	809,6	5	5050	70	125	264	737	68,5	127	68,5	245	160,5	PHP 10SPC800TB
1000	1009,6	5	5050	70	125	264	937	68,5	127	68,5	245	227,5	PHP 10SPC1000TB
1250	1259,6	5	5050	70	125	264	1187	68,5	127	68,5	245	300,0	PHP 10SPC1250TB

Dimensions in mm unless otherwise stated

\* Weights do not include bushings

Non-functional dimensions may vary slightly

Type 7

